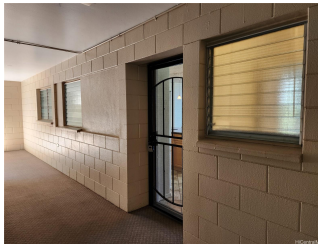
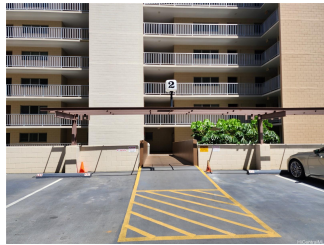


Colonnade on the Greens 98-707 Iho Place Unit 2-403, Aiea 96701 * Colonnade on the Greens * \$439,000 * Originally \$448,000

Bed(s): 2	MLS#: 202411919, FS	Year Built: 1976
Bath: 2/0	Status: Active	Remodeled:
Living Sq. Ft.: 976	List Date & DOM: 05-24-2024 & 37	Total Parking: 1
Land Sq. Ft.: 298,212	Condition: Average	Assessed Value
Lanai Sq. Ft.: 91	Frontage: Golf Course	Building: \$353,500
Sq. Ft. Other: 0	Tax/Year: \$144/2023	Land: \$139,800
Total Sq. Ft. 1,067	Neighborhood: Pearlridge	Total: \$493,300
Maint./Assoc. \$1,025 / \$0	Flood Zone : Zone D - Tool	Stories / CPR: 15-20 / No
Parking: Assigned, Guest, Open - 1	Frontage: Golf Course	
Zoning : 12 - A-2 Medium Density Apartme	View: City, Golf Course	

Public Remarks: COLONNADE ON THE GREENS is a large condominium complex located in Upper Aiea off of Kaonohi Street. This community is special because of its setting overlooking the Pearl at Kalauao Golf Course and Pearl Harbor. It is rich with many amenities that are uncommon for the area. This 2-bedroom, 2-bathroom unit has an attractive and reasonable List Price relative to its "Average" condition. Unit is ideal for a new owner wanting to refresh/renovate it to make it their special home. Unit has a washer & dryer and comes with 1-assigned open parking stall. A few of the many amenities include: Entry guardhouse, roaming security patrol, swimming pool, tennis court, pickleball court, handball/racquetball court, golf putting green, picnic & BBQ area, Resident Manager and many more. Property to be sold in strictly "AS-IS" Condition. **Sale Conditions:** None **Schools:** [Pearl Ridge](#), [Aiea](#), [Aiea](#) * [Request Showing](#), [Photos](#), [History](#), [Maps](#), [Deed](#), [Watch List](#), [Tax Info](#)



Address	Price	Bd & Bth	Living / Avg.	Land Avg.	Lanai	Occ.	FL	DOM
98-707 Iho Place 2-403	\$439,000	2 & 2/0	976 \$450	298,212 \$1	91	65%	4	37

Address	Tax Maint. Ass.	Assessed Land	Assessed Building	Assessed Total	Ratio	Year & Remodeled
98-707 Iho Place 2-403	\$144 \$1,025 \$0	\$139,800	\$353,500	\$493,300	89%	1976 & NA

[98-707 Iho Place 2-403](#) - MLS#: [202411919](#) - Original price was \$448,000 - COLONNADE ON THE GREENS is a large condominium complex located in Upper Aiea off of Kaonohi Street. This community is special because of its setting overlooking the Pearl at Kalauao Golf Course and Pearl Harbor. It is rich with many amenities that are uncommon for the area. This 2-bedroom, 2-bathroom unit has an attractive and reasonable List Price relative to its "Average" condition. Unit is ideal for a new owner wanting to refresh/renovate it to make it their special home. Unit has a washer & dryer and comes with 1-assigned open parking stall. A few of the many amenities include: Entry guardhouse, roaming security patrol, swimming pool, tennis court, pickleball court, handball/racquetball court, golf putting green, picnic & BBQ area, Resident Manager and many more. Property to be sold in strictly "AS-IS" Condition. **Region:** Pearl City **Neighborhood:** Pearlridge **Condition:** Average **Parking:** Assigned, Guest, Open - 1 **Total Parking:** 1 **View:** City, Golf Course **Frontage:** Golf Course **Pool:** **Zoning:** 12 - A-2 Medium Density Apartme **Sale Conditions:** None **Schools:** [Pearl Ridge](#), [Aiea](#), [Aiea](#) * [Request Showing](#), [Photos](#), [History](#), [Maps](#), [Deed](#), [Watch List](#), [Tax Info](#)

DOM = Days on Market, Occ. = Occupancy, FL = Floor Number