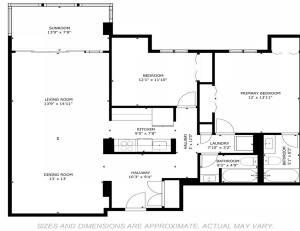


One Waterfront Tower 415 South Street Unit 3203, Honolulu 96813 * \$735,000

Beds: 1	MLS#: 202411972, FS	Year Built: 1989
Bath: 1/0	Status: Active	Remodeled:
Living Sq. Ft.: 804	List Date & DOM: 05-28-2024 & 29	Total Parking: 1
Land Sq. Ft.: 106,548	Condition: Above Average	Assessed Value
Lanai Sq. Ft.: 235	Frontage: Ocean	Building: \$591,900
Sq. Ft. Other: 0	Tax/Year: \$211/2024	Land: \$59,000
Total Sq. Ft. 1,039	Neighborhood: Kakaako	Total: \$650,900
Maint./Assoc. \$1,263 / \$0	Flood Zone : Zone X - Tool	Stories / CPR: 21+ / No
Parking: Assigned, Covered - 1, Garage, Guest, Secured Entry	Frontage: Ocean	
Zoning : Kak - Kakaako Community Development Project	View: City, Coastline, Ocean, Sunset	

Public Remarks: Great ocean, sunset, city and mountain views await you from this impeccably maintained 1 bdrm,1 bath unit with 1 covered and gated parking at One Waterfront Tower. Centrally located in Kakaako just minutes from Downtown. This unit features 804sq ft of interior living space, custom built-ins, floor to ceiling windows to enjoy the breathtaking harbor views as well as airport in the distance. Large 235 sq ft lanai accessible from living and bedroom. Central AC. Amenities include a swimming pool, tennis/pickle ball courts, fitness center, BBQ and more! Half a block from SALT, across street from Restaurant Row offices, Ruth Chris, near Hawaii Pacific University, downtown central business district, restaurants, hospitals and on bus line and a block away from planned future Rail line station. **Sale Conditions:** None **Schools:** , , * [Request Showing, Photos, History, Maps, Deed, Watch List, Tax Info](#)



Address	Price	Bd & Bth	Living / Avg.	Land Avg.	DOM
415 South Street 3203	\$735,000	1 & 1/0	804 \$914	106,548 \$7	29

Address	Tax Maint. Ass.	Assessed Land	Assessed Building	Assessed Total	Ratio	Year & Remodeled
415 South Street 3203	\$211 \$1,263 \$0	\$59,000	\$591,900	\$650,900	113%	1989 & NA

[415 South Street 3203](#) - MLS#: [202411972](#) - Great ocean, sunset, city and mountain views await you from this impeccably maintained 1 bdrm,1 bath unit with 1 covered and gated parking at One Waterfront Tower. Centrally located in Kakaako just minutes from Downtown. This unit features 804sq ft of interior living space, custom built-ins, floor to ceiling windows to enjoy the breathtaking harbor views as well as airport in the distance. Large 235 sq ft lanai accessible from living and bedroom. Central AC. Amenities include a swimming pool, tennis/pickle ball courts, fitness center, BBQ and more! Half a block from SALT, across street from Restaurant Row offices, Ruth Chris, near Hawaii Pacific University, downtown central business district, restaurants, hospitals and on bus line and a block away from planned future Rail line station. **Region:** Metro **Neighborhood:** Kakaako **Condition:** Above Average **Parking:** Assigned, Covered - 1, Garage, Guest, Secured Entry **Total Parking:** 1 **View:** City, Coastline, Ocean, Sunset **Frontage:** Ocean **Pool:** **Zoning:** Kak - Kakaako Community Development Project **Sale Conditions:** None **Schools:** , , * [Request Showing, Photos, History, Maps, Deed, Watch List, Tax Info](#)

DOM = Days on Market