

Lanikea at Waikiki 421 Olohana Street Unit 2004, Honolulu 96815 * Lanikea at Waikiki *

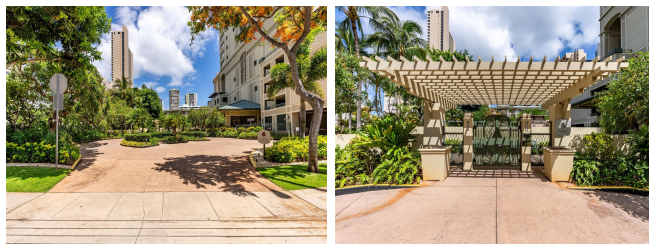
\$849,000

Beds: 2	MLS#: 202412040, FS	Year Built: 2005
Bath: 2/0	Status: Active	Remodeled:
Living Sq. Ft.: 1,017	List Date & DOM: 06-17-2024 & 12	Total Parking: 2
Land Sq. Ft.: 0	Condition: Average	Assessed Value
Lanai Sq. Ft.: 93	Frontage: Other	Building: \$777,400
Sq. Ft. Other: 0	Tax/Year: \$231/2023	Land: \$195,400
Total Sq. Ft. 1,110	Neighborhood: Waikiki	Total: \$972,800
Maint./Assoc. \$1,464 / \$0	Flood Zone : Zone AO - Tool	Stories / CPR: 21+ / No
Parking: Assigned, Covered - 2, Garage, Guest, Secured Entry	Frontage: Other	

Zoning: X2 - Apartment Precinct

View: City, Golf Course, Marina/Canal, Mountain, Ocean, Sunset

Public Remarks: Welcome to Lanikea At Waikiki, where luxury meets convenience in the heart of paradise. This stunning 2-bedroom, 2-bathroom corner unit is waiting for your personal touches and offers a vibrant Waikiki lifestyle perfect for 1st time homebuyers, investors, and city enthusiasts. Enter into a spacious, open floor plan filled with natural light and high ceilings. The kitchen features sleek stainless-steel appliances and expansive granite countertops, ideal for your culinary adventures. Every window frames breathtaking views of mountains, ocean, and sunsets, while the cozy lanai provides a serene retreat. Lanikea At Waikiki offers upscale amenities, including a sparkling pool, soothing jacuzzi, BBQ area, and welcoming lobby with friendly staff. Just moments from Waikiki Beach, you're close to luxury shopping, fine dining, and entertainment. Ready for immediate enjoyment, this is your chance to embrace island living at its finest. Schedule a private tour today and make Lanikea At Waikiki your new home. Your island paradise awaits! **Sale Conditions:** None **Schools:** [Ala Wai](#), [Washington](#), [Kaimuki](#) * [Request Showing](#), [Photos](#), [History](#), [Maps](#), [Deed](#), [Watch List](#), [Tax Info](#)



Address	Price	Bd & Bth	Living / Avg.	Land Avg.	Lanai	Occ.	FL	DOM
421 Olohana Street 2004	\$849,000	2 & 2/0	1,017 \$835	0 \$inf	93	63%	20	12

Address	Tax Maint. Ass.	Assessed Land	Assessed Building	Assessed Total	Ratio	Year & Remodeled
421 Olohana Street 2004	\$231 \$1,464 \$0	\$195,400	\$777,400	\$972,800	87%	2005 & NA

[421 Olohana Street 2004](#) - MLS#: [202412040](#) - Welcome to Lanikea At Waikiki, where luxury meets convenience in the heart of paradise. This stunning 2-bedroom, 2-bathroom corner unit is waiting for your personal touches and offers a vibrant Waikiki lifestyle perfect for 1st time homebuyers, investors, and city enthusiasts. Enter into a spacious, open floor plan filled with natural light and high ceilings. The kitchen features sleek stainless-steel appliances and expansive granite countertops, ideal for your culinary adventures. Every window frames breathtaking views of mountains, ocean, and sunsets, while the cozy lanai provides a serene retreat. Lanikea At Waikiki offers upscale amenities, including a sparkling pool, soothing jacuzzi, BBQ area, and welcoming lobby with friendly staff. Just moments from Waikiki Beach, you're close to luxury shopping, fine dining, and entertainment. Ready for immediate enjoyment, this is your chance to embrace island living at its finest. Schedule a private tour today and make Lanikea At Waikiki your new home. Your island paradise awaits! **Region:** Metro **Neighborhood:** Waikiki **Condition:** Average **Parking:** Assigned, Covered - 2, Garage, Guest, Secured Entry **Total Parking:** 2 **View:** City, Golf Course, Marina/Canal, Mountain, Ocean, Sunset **Frontage:** Other **Pool:** **Zoning:** X2 - Apartment Precinct **Sale Conditions:** None **Schools:** [Ala Wai](#), [Washington](#), [Kaimuki](#) * [Request Showing](#), [Photos](#), [History](#), [Maps](#), [Deed](#), [Watch List](#), [Tax Info](#)

DOM = Days on Market, Occ. = Occupancy, FL = Floor Number