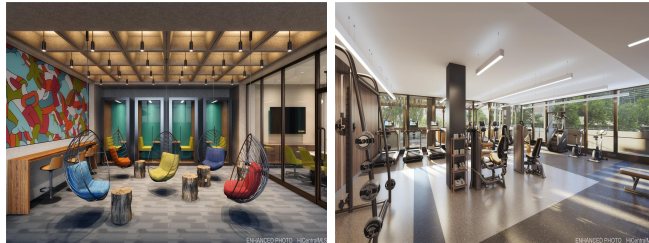


**Modea 168 Queen Street Unit 603, Honolulu 96813 \* \$496,800**

Beds: <b>0</b>	MLS#: <b>202412119, FS</b>	Year Built: <b>1972</b>
Bath: <b>1/0</b>	Status: <b>Active</b>	Remodeled:
Living Sq. Ft.: <b>445</b>	List Date & DOM: <b>06-19-2024 &amp; 10</b>	Total Parking: <b>1</b>
Land Sq. Ft.: <b>0</b>	Condition: <b>Excellent</b>	<a href="#">Assessed Value</a>
Lanai Sq. Ft.: <b>0</b>	Frontage:	Building: <b>\$378,976</b>
Sq. Ft. Other: <b>0</b>	Tax/Year: <b>\$124/2024</b>	Land: <b>\$117,824</b>
Total Sq. Ft. <b>445</b>	Neighborhood: <b>Downtown</b>	Total: <b>\$496,800</b>
Maint./Assoc. <b>\$601 / \$0</b>	<a href="#">Flood Zone</a> : <b>Zone X - Tool</b>	Stories / CPR: / <b>No</b>
Parking: <b>Assigned</b>	Frontage:	
<a href="#">Zoning</a> : <b>34 - BMX-4 Central Business Mix</b>	View: <b>City</b>	

**Public Remarks:** Experience urban living at its finest in this large studio, with parking, located in the heart of the city. This unit features a full-size kitchen with credenza and two operable windows on the makai side of the building, offering peekaboo ocean views. The studio boasts high-end finishes, including luxurious quartz countertops, stainless steel appliances, and Italian-designed European-style custom cabinetry. With ample space and two additional closets, this studio provides both comfort and functionality. Modea enhances your living experience with an array of amenities. Stay active in the expansive 3,000 sq ft fitness facility, unwind in the outdoor BBQ cabanas, or entertain friends in the various indoor areas. Modea is also a pet-friendly residence, featuring a dedicated dog run and doggy bath, ensuring your furry friends are well taken care of. Additional conveniences include 24-hour security, EV charging stations, and guest parking, providing peace of mind and ease of living. Experience the best of cosmopolitan living with exceptional amenities and unparalleled views at Modea. Don't miss out on the opportunity to make this spacious studio your new home. Schedule a tour today! **Sale Conditions:** None  
**Schools:** , , \* [Request Showing](#), [Photos](#), [History](#), [Maps](#), [Deed](#), [Watch List](#), [Tax Info](#)



Address	Price	Bd & Bth	Living / Avg.	Land   Avg.	DOM
<a href="#">168 Queen Street 603</a>	<a href="#">\$496,800</a>	0 & 1/0	445   \$1,116	0   \$inf	10

Address	Tax   Maint.   Ass.	Assessed Land	Assessed Building	Assessed Total	Ratio	Year & Remodeled
<a href="#">168 Queen Street 603</a>	\$124   \$601   \$0	\$117,824	\$378,976	\$496,800	100%	1972 & NA

[168 Queen Street 603](#) - MLS#: [202412119](#) - Experience urban living at its finest in this large studio, with parking, located in the heart of the city. This unit features a full-size kitchen with credenza and two operable windows on the makai side of the building, offering peekaboo ocean views. The studio boasts high-end finishes, including luxurious quartz countertops, stainless steel appliances, and Italian-designed European-style custom cabinetry. With ample space and two additional closets, this studio provides both comfort and functionality. Modea enhances your living experience with an array of amenities. Stay active in the expansive 3,000 sq ft fitness facility, unwind in the outdoor BBQ cabanas, or entertain friends in the various indoor areas. Modea is also a pet-friendly residence, featuring a dedicated dog run and doggy bath, ensuring your furry friends are well taken care of. Additional conveniences include 24-hour security, EV charging stations, and guest parking, providing peace of mind and ease of living. Experience the best of cosmopolitan living with exceptional amenities and unparalleled views at Modea. Don't miss out on the opportunity to make this spacious studio your new home. Schedule a tour today! **Region:** Metro **Neighborhood:** Downtown **Condition:** Excellent **Parking:** Assigned **Total Parking:** 1 **View:** City **Frontage:** **Pool:** **Zoning:** 34 - BMX-4 Central Business Mix **Sale Conditions:** None **Schools:** , , \* [Request Showing](#), [Photos](#), [History](#), [Maps](#), [Deed](#), [Watch List](#), [Tax Info](#)

DOM = Days on Market