

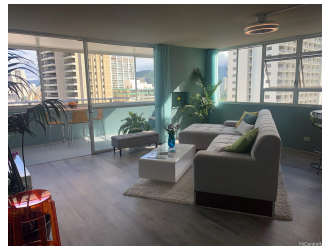
Foster Tower 2500 Kalakaua Avenue Unit 2103, Honolulu 96815 * Foster Tower * \$345,000

Beds: 1	MLS#: 202412148, LH	Year Built: 1962
Bath: 1/0	Status: Active	Remodeled:
Living Sq. Ft.: 814	List Date & DOM: 05-31-2024 & 27	Total Parking: 1
Land Sq. Ft.: 0	Condition: Above Average	Assessed Value
Lanai Sq. Ft.: 113	Frontage:	Building: \$848,000
Sq. Ft. Other: 0	Tax/Year: \$180/2023	Land: \$36,000
Total Sq. Ft. 927	Neighborhood: Waikiki	Total: \$884,000
Maint./Assoc. \$1,335 / \$0	Flood Zone : Zone X - Tool	Stories / CPR: 21+ / No
Parking: Covered - 1, Guest	Frontage:	

Zoning: X6 - Resort Mixed Use Precinct

View: **City, Golf Course, Mountain, Ocean, Sunset**

Public Remarks: Amazing oceanfront living awaits at Foster Tower! This stunning 1 bed, 1 bath unit on the 21st floor offers breathtaking views of the coastline, ocean, mountains, and golf course and great amenities including a salt water pool. Enjoy magnificent sunsets from your private lanai and take advantage of the convenience of 1 covered parking. Don't miss out on this opportunity to own a piece of paradise in Waikiki! **Sale Conditions:** None **Schools:** [Jefferson](#), [Washington](#), [Kaimuki](#) * [Request Showing](#), [Photos](#), [History](#), [Maps](#), [Deed](#), [Watch List](#), [Tax Info](#)



Address	Price	Bd & Bth	Living / Avg.	Land Avg.	Lanai	Occ.	FL	DOM
2500 Kalakaua Avenue 2103	\$345,000 LH	1 & 1/0	814 \$424	0 \$inf	113	5%	20	27

Address	Tax Maint. Ass.	Assessed Land	Assessed Building	Assessed Total	Ratio	Year & Remodeled
2500 Kalakaua Avenue 2103	\$180 \$1,335 \$0	\$36,000	\$848,000	\$884,000	39%	1962 & NA

[2500 Kalakaua Avenue 2103](#) - MLS#: [202412148](#) - Amazing oceanfront living awaits at Foster Tower! This stunning 1 bed, 1 bath unit on the 21st floor offers breathtaking views of the coastline, ocean, mountains, and golf course and great amenities including a salt water pool. Enjoy magnificent sunsets from your private lanai and take advantage of the convenience of 1 covered parking. Don't miss out on this opportunity to own a piece of paradise in Waikiki! **Region:** Metro **Neighborhood:** Waikiki **Condition:** Above Average **Parking:** Covered - 1, Guest **Total Parking:** 1 **View:** City, Golf Course, Mountain, Ocean, Sunset **Frontage:** **Pool:** **Zoning:** X6 - Resort Mixed Use Precinct **Sale Conditions:** None **Schools:** [Jefferson](#), [Washington](#), [Kaimuki](#) * [Request Showing](#), [Photos](#), [History](#), [Maps](#), [Deed](#), [Watch List](#), [Tax Info](#)

DOM = Days on Market, Occ. = Occupancy, FL = Floor Number