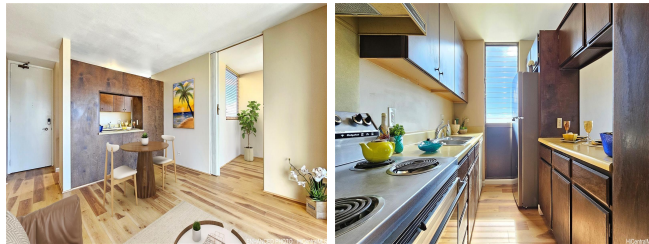


Wilder At Piikoi 1201 Wilder Avenue Unit 2603, Honolulu 96822 * \$399,000

Beds: 1	MLS#: 202412569, FS	Year Built: 1979
Bath: 1/0	Status: Active	Remodeled: 2023
Living Sq. Ft.: 619	List Date & DOM: 06-04-2024 & 26	Total Parking: 1
Land Sq. Ft.: 0	Condition: Above Average	Assessed Value
Lanai Sq. Ft.: 215	Frontage:	Building: \$391,400
Sq. Ft. Other: 0	Tax/Year: \$85/2023	Land: \$38,200
Total Sq. Ft. 834	Neighborhood: Makiki Area	Total: \$429,600
Maint./Assoc. \$811 / \$0	Flood Zone : Zone X - Tool	Stories / CPR: / No
Parking: Assigned, Covered - 1, Guest, Secured Entry, Street	Frontage:	
Zoning : 12 - A-2 Medium Density Apartme	View: City, Diamond Head, Mountain, Ocean, Sunrise	

Public Remarks: Immerse yourself in luxurious urban living with this 1bd, 1bath + a den corner unit in the heart of Honolulu. Revel in breathtaking views of the ocean, mountains, city lights, Diamond Head and Friday fireworks from your own home. The unit boasts new flooring, fresh paint, and meticulous upkeep, while a spacious lanai with roll-down window shutters invites you to unwind. Enjoy the rarity of this breezy, light-filled gem in a secured building. Indulge in top-notch amenities like a heated pool, whirlpool, recreation deck, sauna, and BBQ. Convenience meets comfort with an in-unit brand new washer and dryer. A rare -03 corner stack, most breeze, cool and best views. This unit does not face the building across unlike any lower than this floors. Truly stunning panoramic views. Enjoy unbeatable locations, just moments away from Ala Moana Shopping Center, renowned restaurants, vibrant entertainment options, convenient bus lines and on/off freeway ramps. Bonus extra boxes of the flooring, should you decide to update and make that kitchen your own style. Schedule your tour today! **Sale Conditions:** None **Schools:** [Kaahumanu](#), [Stevenson](#), [Mckinley](#) * [Request Showing](#), [Photos](#), [History](#), [Maps](#), [Deed](#), [Watch List](#), [Tax Info](#)



Address	Price	Bd & Bth	Living / Avg.	Land Avg.	DOM
1201 Wilder Avenue 2603	\$399,000	1 & 1/0	619 \$645	0 \$inf	26

Address	Tax Maint. Ass.	Assessed Land	Assessed Building	Assessed Total	Ratio	Year & Remodeled
1201 Wilder Avenue 2603	\$85 \$811 \$0	\$38,200	\$391,400	\$429,600	93%	1979 & 2023

[1201 Wilder Avenue 2603](#) - MLS#: [202412569](#) - Immerse yourself in luxurious urban living with this 1bd, 1bath + a den corner unit in the heart of Honolulu. Revel in breathtaking views of the ocean, mountains, city lights, Diamond Head and Friday fireworks from your own home. The unit boasts new flooring, fresh paint, and meticulous upkeep, while a spacious lanai with roll-down window shutters invites you to unwind. Enjoy the rarity of this breezy, light-filled gem in a secured building. Indulge in top-notch amenities like a heated pool, whirlpool, recreation deck, sauna, and BBQ. Convenience meets comfort with an in-unit brand new washer and dryer. A rare -03 corner stack, most breeze, cool and best views. This unit does not face the building across unlike any lower than this floors. Truly stunning panoramic views. Enjoy unbeatable locations, just moments away from Ala Moana Shopping Center, renowned restaurants, vibrant entertainment options, convenient bus lines and on/off freeway ramps. Bonus extra boxes of the flooring, should you decide to update and make that kitchen your own style. Schedule your tour today! **Region:** Metro **Neighborhood:** Makiki Area **Condition:** Above Average **Parking:** Assigned, Covered - 1, Guest, Secured Entry, Street **Total Parking:** 1 **View:** City, Diamond Head, Mountain, Ocean, Sunrise **Frontage:** **Pool:** **Zoning:** 12 - A-2 Medium Density Apartme **Sale Conditions:** None **Schools:** [Kaahumanu](#), [Stevenson](#), [Mckinley](#) * [Request Showing](#), [Photos](#), [History](#), [Maps](#), [Deed](#), [Watch List](#), [Tax Info](#)

DOM = Days on Market