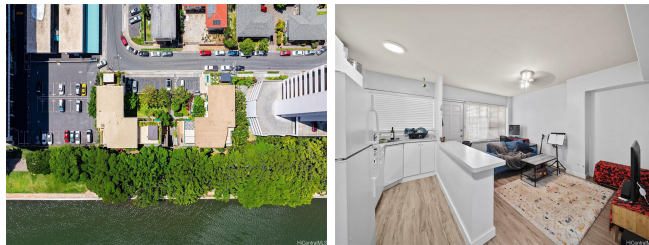


**Commodore Waikiki 1868 Kahakai Drive Unit 112, Honolulu 96814 \* Commodore Waikiki \***

**\$360,000**

Beds: <b>1</b>	MLS#: <b>202413898, FS</b>	Year Built: <b>1947</b>
Bath: <b>1/0</b>	Status: <b>Active</b>	Remodeled: <b>2009</b>
Living Sq. Ft.: <b>405</b>	List Date & DOM: <b>06-10-2024 &amp; 37</b>	Total Parking: <b>0</b>
Land Sq. Ft.: <b>0</b>	Condition: <b>Excellent, Above Average</b>	<a href="#">Assessed Value</a>
Lanai Sq. Ft.: <b>0</b>	Frontage:	Building: <b>\$273,800</b>
Sq. Ft. Other: <b>0</b>	Tax/Year: <b>\$98/2023</b>	Land: <b>\$60,200</b>
Total Sq. Ft. <b>405</b>	Neighborhood: <b>Ala Moana</b>	Total: <b>\$334,000</b>
Maint./Assoc. <b>\$340 / \$0</b>	<a href="#">Flood Zone</a> : <b>Zone AE - Tool</b>	Stories / CPR: <b>One / No</b>
Parking: <b>None, Street</b>	Frontage:	
<a href="#">Zoning</a> : <b>12 - A-2 Medium Density Apartme</b>	View: <b>None</b>	

**Public Remarks:** **\*\*ATTENTION SNOWBIRDS\*\*** Welcome to your slice of paradise, nestled in the heart of Honolulu. This charming unit offers a perfect blend of comfort and convenience in a vibrant urban setting. Conveniently located in the Ala Moana neighborhood, this unit offers easy access to a myriad of dining, shopping, and entertainment options. Spend your days lounging on the nearby beaches, exploring the vibrant nightlife of Waikiki, or indulging in a shopping spree at Ala Moana Center, the largest open-air shopping mall in the world. Contact us now for a private viewing and secure this fantastic opportunity! **Sale Conditions:** None **Schools:** , , \* [Request Showing](#), [Photos](#), [History](#), [Maps](#), [Deed](#), [Watch List](#), [Tax Info](#)



Address	Price	Bd & Bth	Living / Avg.	Land   Avg.	Lanai	Occ.	FL	DOM
<a href="#">1868 Kahakai Drive 112</a>	<b>\$360,000</b>	1 & 1/0	405   \$889	0   \$inf	0	46%	1	37

Address	Tax   Maint.   Ass.	Assessed Land	Assessed Building	Assessed Total	Ratio	Year & Remodeled
<a href="#">1868 Kahakai Drive 112</a>	\$98   \$340   \$0	\$60,200	\$273,800	\$334,000	108%	1947 & 2009

**[1868 Kahakai Drive 112](#)** - MLS#: **202413898** - **\*\*ATTENTION SNOWBIRDS\*\*** Welcome to your slice of paradise, nestled in the heart of Honolulu. This charming unit offers a perfect blend of comfort and convenience in a vibrant urban setting. Conveniently located in the Ala Moana neighborhood, this unit offers easy access to a myriad of dining, shopping, and entertainment options. Spend your days lounging on the nearby beaches, exploring the vibrant nightlife of Waikiki, or indulging in a shopping spree at Ala Moana Center, the largest open-air shopping mall in the world. Contact us now for a private viewing and secure this fantastic opportunity! **Region:** Metro **Neighborhood:** Ala Moana **Condition:** Excellent, Above Average **Parking:** None, Street **Total Parking:** 0 **View:** None **Frontage:** **Pool:** **Zoning:** 12 - A-2 Medium Density Apartme **Sale Conditions:** None **Schools:** , , \* [Request Showing](#), [Photos](#), [History](#), [Maps](#), [Deed](#), [Watch List](#), [Tax Info](#)

DOM = Days on Market, Occ. = Occupancy, FL = Floor Number