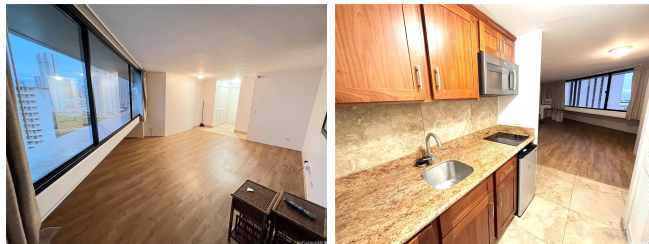


Waikiki Marina Condominium 1700 Ala Moana Boulevard Unit 1702, Honolulu 96815 *

\$288,000

Bed: 0	MLS#: 202413899, FS	Year Built: 1984
Bath: 1/0	Status: Active	Remodeled:
Living Sq. Ft.: 386	List Date & DOM: 06-09-2024 & 37	Total Parking: 1
Land Sq. Ft.: 38,768	Condition: Excellent	Assessed Value
Lanai Sq. Ft.: 0	Frontage:	Building: \$153,100
Sq. Ft. Other: 0	Tax/Year: \$69/2023	Land: \$83,900
Total Sq. Ft. 386	Neighborhood: Waikiki	Total: \$237,000
Maint./Assoc. \$1,000 / \$0	Flood Zone: Zone AE - Tool	Stories / CPR: 21+ / No
Parking: Open - 1	Frontage:	
Zoning: X2 - Apartment Precinct	View: City, Ocean	

Public Remarks: Studio unit with electricity, internet, cable TV, water, and sewer included in the maintenance fee! Embrace the convenience of living just minutes away from Ala Moana Beach Park, Ala Moana Shopping Center, Waikiki, and more. Waikiki Marina offers an array of amenities, including a swimming pool, jacuzzi, tennis court, BBQ area, and a general manager. Don't miss out on this incredible opportunity! **Sale Conditions:** None **Schools:** , , * [Request Showing](#), [Photos](#), [History](#), [Maps](#), [Deed](#), [Watch List](#), [Tax Info](#)



Address	Price	Bd & Bth	Living / Avg.	Land Avg.	DOM
1700 Ala Moana Boulevard 1702	\$288,000	0 & 1/0	386 \$746	38,768 \$7	37

Address	Tax Maint. Ass.	Assessed Land	Assessed Building	Assessed Total	Ratio	Year & Remodeled
1700 Ala Moana Boulevard 1702	\$69 \$1,000 \$0	\$83,900	\$153,100	\$237,000	122%	1984 & NA

[1700 Ala Moana Boulevard 1702](#) - MLS#: [202413899](#) - Studio unit with electricity, internet, cable TV, water, and sewer included in the maintenance fee! Embrace the convenience of living just minutes away from Ala Moana Beach Park, Ala Moana Shopping Center, Waikiki, and more. Waikiki Marina offers an array of amenities, including a swimming pool, jacuzzi, tennis court, BBQ area, and a general manager. Don't miss out on this incredible opportunity! **Region:** Metro **Neighborhood:** Waikiki **Condition:** Excellent **Parking:** Open - 1 **Total Parking:** 1 **View:** City, Ocean **Frontage:** Pool: **Zoning:** X2 - Apartment Precinct **Sale Conditions:** None **Schools:** , , * [Request Showing](#), [Photos](#), [History](#), [Maps](#), [Deed](#), [Watch List](#), [Tax Info](#)

DOM = Days on Market