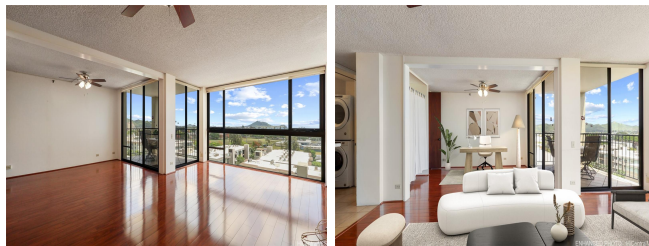


**Windward Passage 322 Aoloa Street Unit 911, Kailua 96734 \* Windward Passage \***

**\$945,000**

Beds: <b>3</b>	MLS#: <b>202414008, FS</b>	Year Built: <b>1979</b>
Bath: <b>2/0</b>	Status: <b>Active Under Contract</b>	Remodeled:
Living Sq. Ft.: <b>1,229</b>	List Date & DOM: <b>06-17-2024 &amp; 5</b>	Total Parking: <b>2</b>
Land Sq. Ft.: <b>0</b>	Condition: <b>Above Average</b>	<a href="#">Assessed Value</a>
Lanai Sq. Ft.: <b>92</b>	Frontage:	Building: <b>\$818,600</b>
Sq. Ft. Other: <b>0</b>	Tax/Year: <b>\$235/2023</b>	Land: <b>\$125,300</b>
Total Sq. Ft. <b>1,321</b>	Neighborhood: <b>Kailua Town</b>	Total: <b>\$943,900</b>
Maint./Assoc. <b>\$1,008 / \$0</b>	<a href="#">Flood Zone</a> : <b>Zone X - Tool</b>	Stories / CPR: / <b>No</b>
Parking: <b>Assigned, Covered - 1, Guest, Open - 1, Secured Entry, Street</b>	Frontage:	
<a href="#">Zoning</a> : <b>12 - A-2 Medium Density Apartme</b>	View: <b>City, Coastline, Garden, Ocean, Sunrise</b>	

**Public Remarks:** Find this treasure within the heart of vibrant Kailua town. Arrive under the port cochere and be greeted by friendly staff. Take the elevator up to the 9th floor & on the north-east side of the building is this beautiful home! Open the door & instantly be captivated by the gorgeous view. A panoramic vista that will surely take your breath away! You can unwind and savor the tranquility of paradise on your private lanai. The home was originally designed as a 3-bedroom, but now converted into 2-bedrooms and a den. The kitchen is equipped with stainless steel appliances and a convenient pantry includes a washer and dryer. Windward Passage offers an abundance of amenities, inspiring an active lifestyle. Whether it's taking a dip in the pool, hosting a bbq with friends, joining the pickleball trend, you can easily be a part of these activities, in the complex. Residents also enjoy storage lockers, car wash, electric vehicle charging stations, dog park, 24-hours security and so much more! Windward Passage is also a short distance to the world renowned Kailua and Lanikai beaches. This is condo living at its finest with a harmonious blend of comfort, convenience and island allure! **Sale Conditions:** None  
**Schools:** [Kailua](#), [Kailua](#), [Kailua](#) \* [Request Showing](#), [Photos](#), [History](#), [Maps](#), [Deed](#), [Watch List](#), [Tax Info](#)



Address	Price	Bd & Bth	Living / Avg.	Land   Avg.	Lanai	Occ.	FL	DOM
<a href="#">322 Aoloa Street 911</a>	<a href="#">\$945,000</a>	3 & 2/0	1,229   \$769	0   \$inf	92	40%	9	5

Address	Tax   Maint.   Ass.	Assessed Land	Assessed Building	Assessed Total	Ratio	Year & Remodeled
<a href="#">322 Aoloa Street 911</a>	\$235   \$1,008   \$0	\$125,300	\$818,600	\$943,900	100%	1979 & NA

[322 Aoloa Street 911](#) - MLS#: [202414008](#) - Find this treasure within the heart of vibrant Kailua town. Arrive under the port cochere and be greeted by friendly staff. Take the elevator up to the 9th floor & on the north-east side of the building is this beautiful home! Open the door & instantly be captivated by the gorgeous view. A panoramic vista that will surely take your breath away! You can unwind and savor the tranquility of paradise on your private lanai. The home was originally designed as a 3-bedroom, but now converted into 2-bedrooms and a den. The kitchen is equipped with stainless steel appliances and a convenient pantry includes a washer and dryer. Windward Passage offers an abundance of amenities, inspiring an active lifestyle. Whether it's taking a dip in the pool, hosting a bbq with friends, joining the pickleball trend, you can easily be a part of these activities, in the complex. Residents also enjoy storage lockers, car wash, electric vehicle charging stations, dog park, 24-hours security and so much more! Windward Passage is also a short distance to the world renowned Kailua and Lanikai beaches. This is condo living at its finest with a harmonious blend of comfort, convenience and island allure! **Region:** Kailua **Neighborhood:** Kailua Town **Condition:** Above Average **Parking:** Assigned, Covered - 1, Guest, Open - 1, Secured Entry, Street **Total Parking:** 2 **View:** City, Coastline, Garden, Ocean, Sunrise **Frontage:** **Pool:** **Zoning:** 12 - A-2 Medium Density Apartme **Sale Conditions:** None **Schools:** [Kailua](#), [Kailua](#), [Kailua](#) \* [Request Showing](#), [Photos](#), [History](#), [Maps](#), [Deed](#), [Watch List](#), [Tax Info](#)

DOM = Days on Market, Occ. = Occupancy, FL = Floor Number