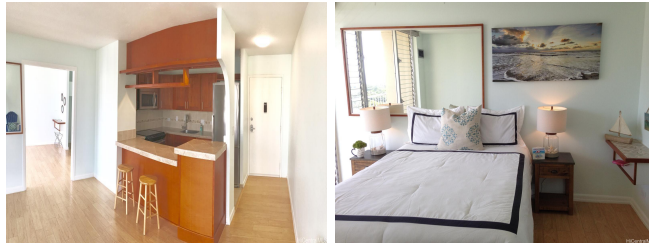


Pavilion At Waikiki 1925 Kalakaua Avenue Unit 1902, Honolulu 96815 * Pavilion At Waikiki

*** \$570,000**

Beds: 1	MLS#: 202414180, FS	Year Built: 1975
Bath: 1/0	Status: Active	Remodeled:
Living Sq. Ft.: 546	List Date & DOM: 06-13-2024 & 34	Total Parking: 2
Land Sq. Ft.: 24,655	Condition: Excellent	Assessed Value
Lanai Sq. Ft.: 104	Frontage: Other	Building: \$472,700
Sq. Ft. Other: 0	Tax/Year: \$132/2023	Land: \$24,200
Total Sq. Ft. 650	Neighborhood: Waikiki	Total: \$496,900
Maint./Assoc. \$915 / \$0	Flood Zone : Zone AO - Tool	Stories / CPR: 21+ / No
Parking: Assigned, Covered - 2, Garage, Guest, Tandem	Frontage: Other	
Zoning : X6 - Resort Mixed Use Precinct	View: Ocean	

Public Remarks: Enjoy beautiful ocean and Fort DeRussey Park view from this excellent condition hi-floor home in this pet friendly central Waikiki building Relax on the 104 sqft lanai running the length of living room and bedroom. Motorized blackout curtains in living room and bedroom protect your furnishings from the sun's glare and UV rays. Central AC, Auto Garage Door Opener, Ceiling Fan, Dishwasher, Disposal, Dryer, Microwave, Range/Oven, Refrigerator, Smoke Detector, Washer. Very reasonable maintenance fee includes Central AC, electricity, hot water, internet, and cable TV service, sewer, water, and other common expenses. Rooftop pool, Bar-B-Q area, and men's and women's showers, restrooms and saunas. 2 covered parking(tandem) and large storage locker. **Sale Conditions:** None **Schools:** [Jefferson](#), [Washington](#), [Kaimuki](#) * [Request Showing](#), [Photos](#), [History](#), [Maps](#), [Deed](#), [Watch List](#), [Tax Info](#)



Address	Price	Bd & Bth	Living / Avg.	Land Avg.	Lanai	Occ.	FL	DOM
1925 Kalakaua Avenue 1902	\$570,000	1 & 1/0	546 \$1,044	24,655 \$23	104	42%	19	34

Address	Tax Maint. Ass.	Assessed Land	Assessed Building	Assessed Total	Ratio	Year & Remodeled
1925 Kalakaua Avenue 1902	\$132 \$915 \$0	\$24,200	\$472,700	\$496,900	115%	1975 & NA

[1925 Kalakaua Avenue 1902](#) - MLS#: [202414180](#) - Enjoy beautiful ocean and Fort DeRussey Park view from this excellent condition hi-floor home in this pet friendly central Waikiki building Relax on the 104 sqft lanai running the length of living room and bedroom. Motorized blackout curtains in living room and bedroom protect your furnishings from the sun's glare and UV rays. Central AC, Auto Garage Door Opener, Ceiling Fan, Dishwasher, Disposal, Dryer, Microwave, Range/Oven, Refrigerator, Smoke Detector, Washer. Very reasonable maintenance fee includes Central AC, electricity, hot water, internet, and cable TV service, sewer, water, and other common expenses. Rooftop pool, Bar-B-Q area, and men's and women's showers, restrooms and saunas. 2 covered parking(tandem) and large storage locker. **Region:** Metro **Neighborhood:** Waikiki **Condition:** Excellent **Parking:** Assigned, Covered - 2, Garage, Guest, Tandem **Total Parking:** 2 **View:** Ocean **Frontage:** Other **Pool:** **Zoning:** X6 - Resort Mixed Use Precinct **Sale Conditions:** None **Schools:** [Jefferson](#), [Washington](#), [Kaimuki](#) * [Request Showing](#), [Photos](#), [History](#), [Maps](#), [Deed](#), [Watch List](#), [Tax Info](#)

DOM = Days on Market, Occ. = Occupancy, FL = Floor Number