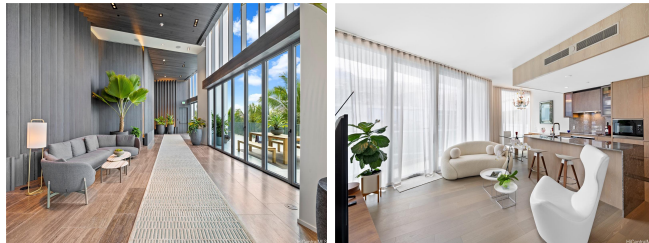


Koula 1000 Auahi Street Unit 715, Honolulu 96814 * **\$1,430,000**

Beds: 2	MLS#: 202414215, FS	Year Built: 2021
Bath: 2/0	Status: Active	Remodeled:
Living Sq. Ft.: 941	List Date & DOM: 06-13-2024 & 33	Total Parking: 1
Land Sq. Ft.: 0	Condition: Excellent, Above Average	Assessed Value
Lanai Sq. Ft.: 137	Frontage:	Building: \$1,250,500
Sq. Ft. Other: 0	Tax/Year: \$613/2023	Land: \$44,000
Total Sq. Ft. 1,078	Neighborhood: Kakaako	Total: \$1,294,500
Maint./Assoc. \$1,233 / \$0	Flood Zone : Zone AE - Tool	Stories / CPR: 21+ / No
Parking: Covered - 1, Guest	Frontage:	
Zoning : Kak - Kakaako Community Development Project	View: Garden, Ocean	

Public Remarks: Welcome to Ko’ula at Ward Village. This stunning corner unit offers a perfect blend of modern design and comfort with its spacious layout and thoughtful features. Sunlight fills every corner of this unit, creating a warm and inviting atmosphere throughout the day. Unit features include 9.5" feet high ceiling, open kitchen, Miele appliances, custom drapery, and toto washlet in primary bath. Enjoy island living and luxury resort-style amenities that include a fitness center, lap pool, two spas, cabanas, sunset bar and lounge, BBQ, kids playground, guest suites, dog park, private dining rooms and more. This 2-bedroom, 2-bathroom unit is not just a home but a retreat in the heart of Ward Village, offering urban living at its finest with proximity to shopping, dining, and entertainment. **Sale Conditions:** None **Schools:** , , * [Request Showing](#), [Photos](#), [History](#), [Maps](#), [Deed](#), [Watch List](#), [Tax Info](#)



Address	Price	Bd & Bth	Living / Avg.	Land Avg.	DOM
1000 Auahi Street 715	\$1,430,000	2 & 2/0	941 \$1,520	0 \$inf	33

Address	Tax Maint. Ass.	Assessed Land	Assessed Building	Assessed Total	Ratio	Year & Remodeled
1000 Auahi Street 715	\$613 \$1,233 \$0	\$44,000	\$1,250,500	\$1,294,500	110%	2021 & NA

[1000 Auahi Street 715](#) - MLS#: [202414215](#) - Welcome to Ko’ula at Ward Village. This stunning corner unit offers a perfect blend of modern design and comfort with its spacious layout and thoughtful features. Sunlight fills every corner of this unit, creating a warm and inviting atmosphere throughout the day. Unit features include 9.5" feet high ceiling, open kitchen, Miele appliances, custom drapery, and toto washlet in primary bath. Enjoy island living and luxury resort-style amenities that include a fitness center, lap pool, two spas, cabanas, sunset bar and lounge, BBQ, kids playground, guest suites, dog park, private dining rooms and more. This 2-bedroom, 2-bathroom unit is not just a home but a retreat in the heart of Ward Village, offering urban living at its finest with proximity to shopping, dining, and entertainment. **Region:** Metro **Neighborhood:** Kakaako **Condition:** Excellent, Above Average **Parking:** Covered - 1, Guest **Total Parking:** 1 **View:** Garden, Ocean **Frontage:** **Pool:** **Zoning:** Kak - Kakaako Community Development Project **Sale Conditions:** None **Schools:** , , * [Request Showing](#), [Photos](#), [History](#), [Maps](#), [Deed](#), [Watch List](#), [Tax Info](#)

DOM = Days on Market