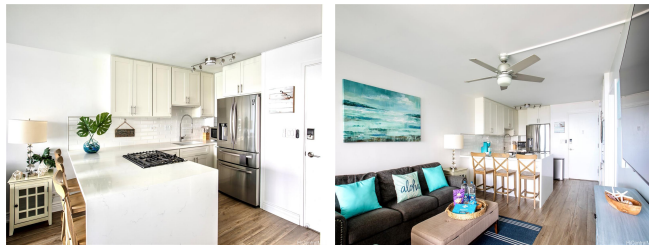


**Hanohano hale 53-549 Kamehameha Highway Unit 703, Hauula 96717 \* Hanohano hale \***

**\$419,000**

Beds: <b>1</b>	MLS#: <b>202414361, FS</b>	Year Built: <b>1973</b>
Bath: <b>1/0</b>	Status: <b>Active</b>	Remodeled: <b>2023</b>
Living Sq. Ft.: <b>475</b>	List Date & DOM: <b>06-19-2024 &amp; 24</b>	Total Parking: <b>1</b>
Land Sq. Ft.: <b>114,868</b>	Condition: <b>Above Average</b>	<a href="#">Assessed Value</a>
Lanai Sq. Ft.: <b>158</b>	<b>Ocean, Sandy Beach, Waterfront</b>	Building: <b>\$56,800</b>
Sq. Ft. Other: <b>0</b>	Tax/Year: <b>\$41/2023</b>	Land: <b>\$83,400</b>
Total Sq. Ft. <b>633</b>	Neighborhood: <b>Punaluu</b>	Total: <b>\$140,200</b>
Maint./Assoc. <b>\$1,125 / \$0</b>	<a href="#">Flood Zone</a> : <b>Zone AE - Tool</b>	Stories / CPR: <b>One, 4-7 / No</b>
Parking: <b>Assigned, Open - 1</b>	Frontage: <b>Ocean, Sandy Beach, Waterfront</b>	
<a href="#">Zoning</a> : <b>12 - A-2 Medium Density Apartme</b>	View: <b>Coastline, Garden, Mountain, Ocean</b>	

**Public Remarks:** Oceanfront Penthouse sold fully furnished! Top floor, meticulously remodeled to reflect a tropical oasis. Indulge in the ultimate Hawaii lifestyle. Direct ocean view from every room! Your very own piece of waterfront paradise awaits for you on the North Shore of Oahu. This stunning, newly remodeled 1 bdrm, 1 bath condo unit is fully furnished and boasts luxurious finishes making it perfect for residing in full-time, part-time or for an income producing rental. Sit peacefully on your expansive, private lanai with direct views of the Pacific Ocean and swaying palm trees. Sleep soundly to waves lapping on the sand. Tastefully designed in a casual coastal aesthetic. Custom cabinetry, oversized waterfall peninsula in kitchen. Minutes from Kualoa Ranch, Polynesian Cultural Center, BYU & famous Haleiwa! Close to local eateries, grocery stores and attractions. Within walking distance of several food trucks, convenience store and cafe. 1 assigned parking space comes with the apartment. The beachfront complex offers ample seating areas, community pool, and bbq / picnic area. A perfect place for paradise living. **Sale Conditions:** None **Schools:** , , \* [Request Showing](#), [Photos](#), [History](#), [Maps](#), [Deed](#), [Watch List](#), [Tax Info](#)



Address	Price	Bd & Bth	Living / Avg.	Land   Avg.	Lanai	Occ.	FL	DOM
<a href="#">53-549 Kamehameha Highway 703</a>	<b>\$419,000</b>	1 & 1/0	475   \$882	114,868   \$4	158	30%	7	24

Address	Tax   Maint.   Ass.	Assessed Land	Assessed Building	Assessed Total	Ratio	Year & Remodeled
<a href="#">53-549 Kamehameha Highway 703</a>	\$41   \$1,125   \$0	\$83,400	\$56,800	\$140,200	299%	1973 & 2023

[53-549 Kamehameha Highway 703](#) - MLS#: [202414361](#) - Oceanfront Penthouse sold fully furnished! Top floor, meticulously remodeled to reflect a tropical oasis. Indulge in the ultimate Hawaii lifestyle. Direct ocean view from every room! Your very own piece of waterfront paradise awaits for you on the North Shore of Oahu. This stunning, newly remodeled 1 bdrm, 1 bath condo unit is fully furnished and boasts luxurious finishes making it perfect for residing in full-time, part-time or for an income producing rental. Sit peacefully on your expansive, private lanai with direct views of the Pacific Ocean and swaying palm trees. Sleep soundly to waves lapping on the sand. Tastefully designed in a casual coastal aesthetic. Custom cabinetry, oversized waterfall peninsula in kitchen. Minutes from Kualoa Ranch, Polynesian Cultural Center, BYU & famous Haleiwa! Close to local eateries, grocery stores and attractions. Within walking distance of several food trucks, convenience store and cafe. 1 assigned parking space comes with the apartment. The beachfront complex offers ample seating areas, community pool, and bbq / picnic area. A perfect place for paradise living. **Region:** Kaneohe **Neighborhood:** Punaluu **Condition:** Above Average **Parking:** Assigned, Open - 1 **Total Parking:** 1 **View:** Coastline, Garden, Mountain, Ocean **Frontage:** Ocean,Sandy Beach,Waterfront **Pool:** **Zoning:** 12 - A-2 Medium Density Apartme **Sale Conditions:** None **Schools:** , , \* [Request Showing](#), [Photos](#), [History](#), [Maps](#), [Deed](#), [Watch List](#), [Tax Info](#)

DOM = Days on Market, Occ. = Occupancy, FL = Floor Number