

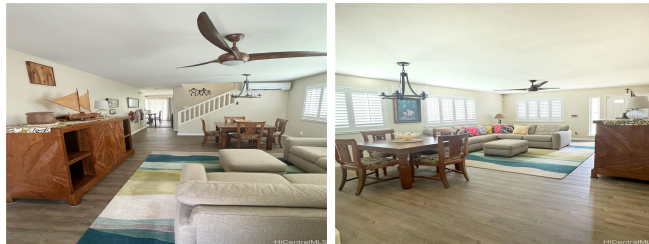
94-1001 Kihikihi Street, Waipahu 96797 * * \$1,299,999

Beds: 4	MLS#: 202414381, FS	Year Built: 2003
Bath: 2/1	Status: Active	Remodeled:
Living Sq. Ft.: 2,157	List Date & DOM: 06-17-2024 & 12	Total Parking: 4
Land Sq. Ft.: 5,542	Condition: Above Average	Assessed Value
Lanai Sq. Ft.: 0	Frontage:	Building: \$464,000
Sq. Ft. Other: 5,542	Tax/Year: \$319/2023	Land: \$827,900
Total Sq. Ft. 7,699	Neighborhood: Royal Kunia	Total: \$1,291,900
Maint./Assoc. \$0 / \$63	Flood Zone : Zone D - Tool	Stories / CPR: Two / No
Parking: 3 Car+, Driveway, Garage, Street	Frontage:	

[Zoning](#): **05 - R-5 Residential District**

View: **City, Coastline, Diamond Head, Golf Course, Mountain, Ocean, Sunrise, Sunset**

Public Remarks: E Komo Mai to Royal Kunia. Centrally located and minutes away from Walmart, Costco, Golf Courses, parks, schools, & easy freeway access, This corner lot home boasts OCEAN, DIAMOND HEAD, CITY, MOUNTAIN, and GOLF COURSE views AND Neighbors on only 1 side. This Move-in-ready NEWLY REMODELED 4 bed 3 bath home features; 3 living rooms, 6 SPLIT AIR units, solar water heater, plantation shutters, dual paned windows for noise reduction, alert alarm system, scratch and waterproof luxury vinyl floors, 4+ vehicle parking, fenced yard w/ sprinkler system, terraced gardens, backyard storage area and retaining wall for added recreation space. Relish in a fully renovated kitchen w/ quartz countertops and stainless steel appliances. Entertain guests w/ open concept kitchen & living areas or host in the spacious 2nd living room. Cozy up in upstairs living room or stretch out in landing area w/ Bonus quartz study. Covered lanai provides perfect backyard BBQ space. Splendor in 26 OWNED PV panels + Net Metering. Panels generate enough energy for entire house to run AC all day, owner pays about \$85/mo in electricity. FURNITURE NEGOTIABLE! **Sale Conditions:** None **Schools:** , , * [Request Showing](#), [Photos](#), [History](#), [Maps](#), [Deed](#), [Watch List](#), [Tax Info](#)



Address	Price	Bd & Bth	Living / Avg.	Land Avg.	Lanai	Occ.	FL	DOM
94-1001 Kihikihi Street	\$1,299,999	4 & 2/1	2,157 \$603	5,542 \$235	0	0%	0	12

Address	Tax Maint. Ass.	Assessed Land	Assessed Building	Assessed Total	Ratio	Year & Remodeled
94-1001 Kihikihi Street	\$319 \$0 \$63	\$827,900	\$464,000	\$1,291,900	101%	2003 & NA

[94-1001 Kihikihi Street](#) - MLS#: [202414381](#) - E Komo Mai to Royal Kunia. Centrally located and minutes away from Walmart, Costco, Golf Courses, parks, schools, & easy freeway access, This corner lot home boasts OCEAN, DIAMOND HEAD, CITY, MOUNTAIN, and GOLF COURSE views AND Neighbors on only 1 side. This Move-in-ready NEWLY REMODELED 4 bed 3 bath home features; 3 living rooms, 6 SPLIT AIR units, solar water heater, plantation shutters, dual paned windows for noise reduction, alert alarm system, scratch and waterproof luxury vinyl floors, 4+ vehicle parking, fenced yard w/ sprinkler system, terraced gardens, backyard storage area and retaining wall for added recreation space. Relish in a fully renovated kitchen w/ quartz countertops and stainless steel appliances. Entertain guests w/ open concept kitchen & living areas or host in the spacious 2nd living room. Cozy up in upstairs living room or stretch out in landing area w/ Bonus quartz study. Covered lanai provides perfect backyard BBQ space. Splendor in 26 OWNED PV panels + Net Metering. Panels generate enough energy for entire house to run AC all day, owner pays about \$85/mo in electricity. FURNITURE NEGOTIABLE! **Region:** Waipahu **Neighborhood:** Royal Kunia **Condition:** Above Average **Parking:** 3 Car+, Driveway, Garage, Street **Total Parking:** 4 **View:** City, Coastline, Diamond Head, Golf Course, Mountain, Ocean, Sunrise, Sunset **Frontage:** **Pool:** None **Zoning:** 05 - R-5 Residential District **Sale Conditions:** None **Schools:** , , * [Request Showing](#), [Photos](#), [History](#), [Maps](#), [Deed](#), [Watch List](#), [Tax Info](#)

DOM = Days on Market, Occ. = Occupancy, FL = Floor Number