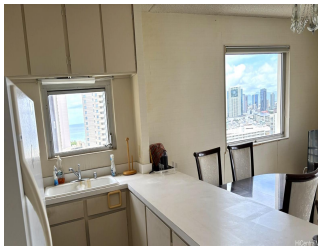


Villa On Eaton Square 400 Hobron Lane Unit 2602, Honolulu 96815 * \$465,000

Beds: 1	MLS#: 202414512, FS	Year Built: 1974
Bath: 1/0	Status: Active	Remodeled:
Living Sq. Ft.: 635	List Date & DOM: 06-18-2024 & 12	Total Parking: 1
Land Sq. Ft.: 104,718	Condition: Average, Fair	Assessed Value
Lanai Sq. Ft.: 59	Frontage:	Building: \$403,300
Sq. Ft. Other: 0	Tax/Year: \$140/2024	Land: \$65,900
Total Sq. Ft. 694	Neighborhood: Waikiki	Total: \$469,200
Maint./Assoc. \$916 / \$0	Flood Zone : Zone AE - Tool	Stories / CPR: / No
Parking: Covered - 1, Unassigned	Frontage:	
Zoning : X2 - Apartment Precinct	View: City, Coastline, Marina/Canal, Mountain, Ocean, Sunrise	

Public Remarks: High floor , desirable corner, end unit. Larger living area for even number unit. Windows in kitchen and living room, offers beautiful ocean views and provide lot of natural light. MUST SEE TO APPRICIATE. Lots of amenities. Pool, deck, Sauna, Exercise room, Bbq. Stuning views Diamond Head to Ala Moana Park, Sunrise to Sunset. Market, Bank and Bakery within the Project. Property Tax amount is from year 2024. TO BE SOLD "AS IS" CONDITION **Sale Conditions:** None **Schools:** [Jefferson](#), [Washington](#), [Kaimuki](#) * [Request Showing](#), [Photos](#), [History](#), [Maps](#), [Deed](#), [Watch List](#), [Tax Info](#)



Address	Price	Bd & Bth	Living / Avg.	Land Avg.	DOM
400 Hobron Lane 2602	\$465,000	1 & 1/0	635 \$732	104,718 \$4	12

Address	Tax Maint. Ass.	Assessed Land	Assessed Building	Assessed Total	Ratio	Year & Remodeled
400 Hobron Lane 2602	\$140 \$916 \$0	\$65,900	\$403,300	\$469,200	99%	1974 & NA

[400 Hobron Lane 2602](#) - MLS#: [202414512](#) - High floor , desirable corner, end unit. Larger living area for even number unit. Windows in kitchen and living room, offers beautiful ocean views and provide lot of natural light. MUST SEE TO APPRICIATE. Lots of amenities. Pool, deck, Sauna, Exercise room, Bbq. Stuning views Diamond Head to Ala Moana Park, Sunrise to Sunset. Market, Bank and Bakery within the Project. Property Tax amount is from year 2024. TO BE SOLD "AS IS" CONDITION **Region:** Metro **Neighborhood:** Waikiki **Condition:** Average, Fair **Parking:** Covered - 1, Unassigned **Total Parking:** 1 **View:** City, Coastline, Marina/Canal, Mountain, Ocean, Sunrise **Frontage:** **Pool:** **Zoning:** X2 - Apartment Precinct **Sale Conditions:** None **Schools:** [Jefferson](#), [Washington](#), [Kaimuki](#) * [Request Showing](#), [Photos](#), [History](#), [Maps](#), [Deed](#), [Watch List](#), [Tax Info](#)

DOM = Days on Market