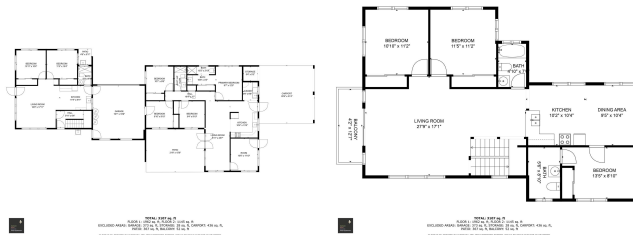


94-570 Anaaina Place, Waipahu 96797 * \$1,588,000

Beds: 9	MLS#: 202414539, FS	Year Built: 1986
Bath: 5/0	Status: Active Under Contract	Remodeled: 2024
Living Sq. Ft.: 3,496	List Date & DOM: 06-18-2024 & 12	Total Parking: 6
Land Sq. Ft.: 7,484	Condition: Excellent	Assessed Value
Lanai Sq. Ft.: 0	Frontage: Other	Building: \$534,100
Sq. Ft. Other: 0	Tax/Year: \$596/2023	Land: \$742,000
Total Sq. Ft. 3,496	Neighborhood: Waipahu Estates	Total: \$1,276,100
Maint./Assoc. \$0 / \$0	Flood Zone : Zone D - Tool	Stories / CPR: Two / No
Parking: 3 Car+, Carport, Garage	Frontage: Other	
Zoning : 05 - R-5 Residential District	View: Garden	

Public Remarks: This is the multi-generational Home you have been waiting for! Located in convenient Waipahu, this home is remodeled, has new appliances and Shines. This 9 bedroom, 5 full baths and 6 parking spots with an enclosed 2 car garage is at the end of a quiet cul-de-sac that overlooks the Park. This single family home is low maintenance with multiple possibilities for different living arrangements as it has a main house with 4 bedrooms, 2 full baths, Upstairs has 3 bedrooms, 2 full baths and an additional 2 bedroom, 1 full bath unit downstairs, with separate entrances. No rear neighbors, you can stroll through the park via your own back entrance. As a bonus, it has lovely fruit trees around the property. Living in one unit and renting the others out has great income potential. The home has been thoughtfully designed with functionality. Remodeled in 2024 with new flooring, appliances and updated showers, it's sure to make anyone happy. It also has Photovoltaic (36 leased panels, verify), solar water and 3 Large water heater tanks, kept in the enclosed garage for efficiency. Shopping malls/outlets, Good Restaurants and Freeways are just minutes away. Call us for a private viewing ASAP. **Sale Conditions:** None **Schools:** , , * [Request Showing](#), [Photos](#), [History](#), [Maps](#), [Deed](#), [Watch List](#), [Tax Info](#)



Address	Price	Bd & Bth	Living / Avg.	Land Avg.	DOM
94-570 Anaaina Place	\$1,588,000	9 & 5/0	3,496 \$454	7,484 \$212	12

Address	Tax Maint. Ass.	Assessed Land	Assessed Building	Assessed Total	Ratio	Year & Remodeled
94-570 Anaaina Place	\$596 \$0 \$0	\$742,000	\$534,100	\$1,276,100	124%	1986 & 2024

[94-570 Anaaina Place](#) - MLS#: [202414539](#) - This is the multi-generational Home you have been waiting for! Located in convenient Waipahu, this home is remodeled, has new appliances and Shines. This 9 bedroom, 5 full baths and 6 parking spots with an enclosed 2 car garage is at the end of a quiet cul-de-sac that overlooks the Park. This single family home is low maintenance with multiple possibilities for different living arrangements as it has a main house with 4 bedrooms, 2 full baths, Upstairs has 3 bedrooms, 2 full baths and an additional 2 bedroom, 1 full bath unit downstairs, with separate entrances. No rear neighbors, you can stroll through the park via your own back entrance. As a bonus, it has lovely fruit trees around the property. Living in one unit and renting the others out has great income potential. The home has been thoughtfully designed with functionality. Remodeled in 2024 with new flooring, appliances and updated showers, it's sure to make anyone happy. It also has Photovoltaic (36 leased panels, verify), solar water and 3 Large water heater tanks, kept in the enclosed garage for efficiency. Shopping malls/outlets, Good Restaurants and Freeways are just minutes away. Call us for a private viewing ASAP. **Region:** Waipahu **Neighborhood:** Waipahu Estates **Condition:** Excellent **Parking:** 3 Car+, Carport, Garage **Total Parking:** 6 **View:** Garden **Frontage:** Other **Pool:** None **Zoning:** 05 - R-5 Residential District **Sale Conditions:** None **Schools:** , , * [Request Showing](#), [Photos](#), [History](#), [Maps](#), [Deed](#), [Watch List](#), [Tax Info](#)

DOM = Days on Market