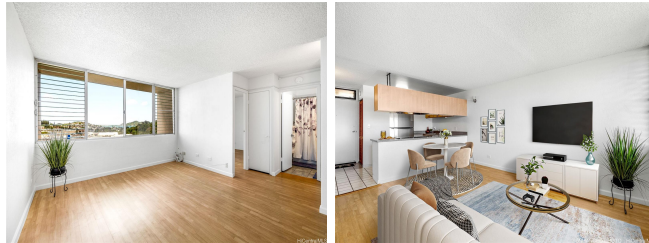


**Hale Anaole Apts 46-255 Kahuhipa Street Unit A803, Kaneohe 96744 \* \$449,000**

Beds: <b>2</b>	MLS#: <b>202414720, FS</b>	Year Built: <b>1976</b>
Bath: <b>1/0</b>	Status: <b>Active</b>	Remodeled:
Living Sq. Ft.: <b>723</b>	List Date & DOM: <b>06-24-2024 &amp; 6</b>	Total Parking: <b>1</b>
Land Sq. Ft.: <b>0</b>	Condition: <b>Average</b>	<a href="#">Assessed Value</a>
Lanai Sq. Ft.: <b>0</b>	Frontage:	Building: <b>\$411,200</b>
Sq. Ft. Other: <b>0</b>	Tax/Year: <b>\$91/2024</b>	Land: <b>\$59,300</b>
Total Sq. Ft. <b>723</b>	Neighborhood: <b>Windward Estates</b>	Total: <b>\$470,500</b>
Maint./Assoc. <b>\$775 / \$0</b>	<a href="#">Flood Zone</a> : <b>Zone X - Tool</b>	Stories / CPR: <b>8-14 / No</b>
Parking: <b>Assigned, Guest, Street</b>	Frontage:	
<a href="#">Zoning</a> : <b>12 - A-2 Medium Density Apartme</b>	View: <b>City, Mountain, Ocean</b>	

**Public Remarks:** Located in the heart of Kaneohe, this spacious 2-bedroom, 1-bath unit offers 723 square feet of living space, featuring ocean and mountain views. Enjoy the cool breezes and convenience of an in-unit washer and dryer, new refrigerator, and range/oven. The unit includes one assigned parking stall. The secured building boasts a resident manager, BBQ area, tennis court, car wash area, guest parking, playground, and ample street parking. Maintenance fees cover water, sewer, hot water, cable, common area upkeep, and electricity. The community is conveniently situated just minutes from Windward Mall, supermarkets, schools, and restaurants, with easy access to Likelike Highway and the H-3 freeway. Welcome home to Hale Anaole! One or more photos have been enhanced. **Sale Conditions:** None **Schools:** , , \* [Request Showing](#), [Photos](#), [History](#), [Maps](#), [Deed](#), [Watch List](#), [Tax Info](#)



Address	Price	Bd & Bth	Living / Avg.	Land   Avg.	DOM
<a href="#">46-255 Kahuhipa Street A803</a>	<a href="#">\$449,000</a>	2 & 1/0	723   \$621	0   \$inf	6

Address	Tax   Maint.   Ass.	Assessed Land	Assessed Building	Assessed Total	Ratio	Year & Remodeled
<a href="#">46-255 Kahuhipa Street A803</a>	\$91   \$775   \$0	\$59,300	\$411,200	\$470,500	95%	1976 & NA

[46-255 Kahuhipa Street A803](#) - MLS#: [202414720](#) - Located in the heart of Kaneohe, this spacious 2-bedroom, 1-bath unit offers 723 square feet of living space, featuring ocean and mountain views. Enjoy the cool breezes and convenience of an in-unit washer and dryer, new refrigerator, and range/oven. The unit includes one assigned parking stall. The secured building boasts a resident manager, BBQ area, tennis court, car wash area, guest parking, playground, and ample street parking. Maintenance fees cover water, sewer, hot water, cable, common area upkeep, and electricity. The community is conveniently situated just minutes from Windward Mall, supermarkets, schools, and restaurants, with easy access to Likelike Highway and the H-3 freeway. Welcome home to Hale Anaole! One or more photos have been enhanced. **Region:** Kaneohe **Neighborhood:** Windward Estates **Condition:** Average **Parking:** Assigned, Guest, Street **Total Parking:** 1 **View:** City, Mountain, Ocean **Frontage:** **Pool:** **Zoning:** 12 - A-2 Medium Density Apartme **Sale Conditions:** None **Schools:** , , \* [Request Showing](#), [Photos](#), [History](#), [Maps](#), [Deed](#), [Watch List](#), [Tax Info](#)

DOM = Days on Market