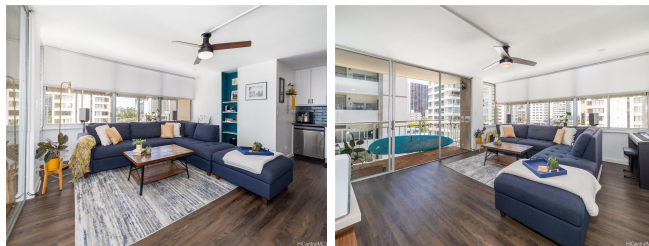


**Waikiki Skyliner 2415 Ala Wai Boulevard Unit 808, Honolulu 96815 \* Waikiki Skyliner \***

**\$540,000**

Bed: <b>2</b>	MLS#: <b>202414812, FS</b>	Year Built: <b>1968</b>
Bath: <b>1/0</b>	Status: <b>Active</b>	Remodeled: <b>2021</b>
Living Sq. Ft.: <b>771</b>	List Date & DOM: <b>06-26-2024 &amp; 21</b>	Total Parking: <b>1</b>
Land Sq. Ft.: <b>20,691</b>	Condition: <b>Excellent</b>	<a href="#">Assessed Value</a>
Lanai Sq. Ft.: <b>90</b>	Frontage:	Building: <b>\$419,600</b>
Sq. Ft. Other: <b>0</b>	Tax/Year: <b>\$83/2023</b>	Land: <b>\$66,300</b>
Total Sq. Ft. <b>861</b>	Neighborhood: <b>Waikiki</b>	Total: <b>\$485,900</b>
Maint./Assoc. <b>\$935 / \$0</b>	<a href="#">Flood Zone</a> : <b>Zone AE - Tool</b>	Stories / CPR: <b>21+ / No</b>
Parking: <b>Assigned, Covered - 1, Street</b>	Frontage:	
<a href="#">Zoning</a> : <b>X2 - Apartment Precinct</b>	View: <b>City, Diamond Head, Ocean</b>	

**Public Remarks:** Beautiful & bright, newly updated 2-bedroom corner unit with peek-a-boo ocean & Diamond Head views & oversized assigned parking space! Stunning kitchen boasts quartz countertops, granite sink, 'touchless' faucet & glass cooktop. Smart appliances include wifi-enabled ThinQ refrigerator, dishwasher, washer/dryer. Appliances & lighting can all be linked to Google or Apple Home. Luxury vinyl plank flooring. Ceiling fans in bedrooms & living room keep things cool, in addition to the portable AC units that can be used on hotter days. Storage is plentiful with large closets in bedrooms, large pantry/closet in kitchen, plenty of upgraded kitchen cabinets, and additional storage for rent on every floor. The 90sqft lanai is an extension to your living space with a view of the Ala Wai. Concrete perimeter walls & cross breezes keep the unit comfortable. You will find yourself in the heart of Waikiki, but on a quiet side street away from the hustle and bustle. Just a few blocks from Waikiki Beach, close to restaurants, shops, parks, Honolulu Zoo. WAIKIKI SKYLINER is a pet friendly (2 per unit), secure building w/ secure garage & elevator, live-in resident manager and private pool for residents. **Sale Conditions:** None **Schools:** [Jefferson](#), [Washington](#), [Kaimuki](#) \* [Request Showing](#), [Photos](#), [History](#), [Maps](#), [Deed](#), [Watch List](#), [Tax Info](#)



Address	Price	Bd & Bth	Living / Avg.	Land   Avg.	Lanai	Occ.	FL	DOM
<a href="#">2415 Ala Wai Boulevard 808</a>	<a href="#">\$540,000</a>	2 & 1/0	771   \$700	20,691   \$26	90	59%	8	21

Address	Tax   Maint.   Ass.	Assessed Land	Assessed Building	Assessed Total	Ratio	Year & Remodeled
<a href="#">2415 Ala Wai Boulevard 808</a>	\$83   \$935   \$0	\$66,300	\$419,600	\$485,900	111%	1968 & 2021

[2415 Ala Wai Boulevard 808](#) - MLS#: [202414812](#) - Beautiful & bright, newly updated 2-bedroom corner unit with peek-a-boo ocean & Diamond Head views & oversized assigned parking space! Stunning kitchen boasts quartz countertops, granite sink, 'touchless' faucet & glass cooktop. Smart appliances include wifi-enabled ThinQ refrigerator, dishwasher, washer/dryer. Appliances & lighting can all be linked to Google or Apple Home. Luxury vinyl plank flooring. Ceiling fans in bedrooms & living room keep things cool, in addition to the portable AC units that can be used on hotter days. Storage is plentiful with large closets in bedrooms, large pantry/closet in kitchen, plenty of upgraded kitchen cabinets, and additional storage for rent on every floor. The 90sqft lanai is an extension to your living space with a view of the Ala Wai. Concrete perimeter walls & cross breezes keep the unit comfortable. You will find yourself in the heart of Waikiki, but on a quiet side street away from the hustle and bustle. Just a few blocks from Waikiki Beach, close to restaurants, shops, parks, Honolulu Zoo. WAIKIKI SKYLINER is a pet friendly (2 per unit), secure building w/ secure garage & elevator, live-in resident manager and private pool for residents. **Region:** Metro **Neighborhood:** Waikiki **Condition:** Excellent **Parking:** Assigned, Covered - 1, Street **Total Parking:** 1 **View:** City, Diamond Head, Ocean **Frontage:** **Pool:** **Zoning:** X2 - Apartment Precinct **Sale Conditions:** None **Schools:** [Jefferson](#), [Washington](#), [Kaimuki](#) \* [Request Showing](#), [Photos](#), [History](#), [Maps](#), [Deed](#), [Watch List](#), [Tax Info](#)

DOM = Days on Market, Occ. = Occupancy, FL = Floor Number