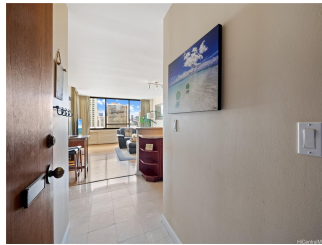


**Aloha Towers 430 Lewers Street Unit 1505, Honolulu 96815 \* \$555,000**

Beds: <b>1</b>	MLS#: <b>202415134, FS</b>	Year Built: <b>1976</b>
Bath: <b>1/0</b>	Status: <b>Active</b>	Remodeled: <b>2008</b>
Living Sq. Ft.: <b>673</b>	List Date & DOM: <b>07-02-2024 &amp; 14</b>	Total Parking: <b>1</b>
Land Sq. Ft.: <b>0</b>	Condition: <b>Excellent</b>	<a href="#">Assessed Value</a>
Lanai Sq. Ft.: <b>89</b>	Frontage: <b>Other</b>	Building: <b>\$447,000</b>
Sq. Ft. Other: <b>0</b>	Tax/Year: <b>\$134/2024</b>	Land: <b>\$62,200</b>
Total Sq. Ft. <b>762</b>	Neighborhood: <b>Waikiki</b>	Total: <b>\$509,200</b>
Maint./Assoc. <b>\$948 / \$0</b>	<a href="#">Flood Zone</a> : <b>Zone AO - Tool</b>	Stories / CPR: <b>21+ / No</b>
Parking: <b>Assigned, Covered - 1</b>	Frontage: <b>Other</b>	
<a href="#">Zoning</a> : <b>X2 - Apartment Precinct</b>	View: <b>City, Mountain, Ocean</b>	

**Public Remarks:** Welcome to your Hawaiian dream home in the highly sought-after Aloha Towers! This nicely upgraded, fully furnished, move-in ready, 1 bedroom condo offers a comfortable and exciting lifestyle. This unit features granite countertops in both the kitchen and bathroom, cherry color cabinets, bamboo flooring throughout, and in-suite washer/dryer. Relax and unwind with breathtaking ocean and city views from your spacious lanai. Aloha Towers is pet friendly and has 24-hour security. Amenities include 2 heated pools ( Ewa & DH Towers), whirlpool, sauna, and barbecue areas, ample guest parking and a popular mini-mart on the ground level for your convenience. Experience the best of Waikiki with easy access to beautiful beaches, variety of restaurants, trendy shops, and vibrant entertainment. Don't miss the opportunity to own this slice of paradise in Waikiki! Contact me today! **Sale Conditions:** None **Schools:** , , \* [Request Showing](#), [Photos](#), [History](#), [Maps](#), [Deed](#), [Watch List](#), [Tax Info](#)



Address	Price	Bd & Bth	Living / Avg.	Land   Avg.	DOM
<a href="#">430 Lewers Street 1505</a>	<a href="#">\$555,000</a>	1 & 1/0	673   \$825	0   \$inf	14

Address	Tax   Maint.   Ass.	Assessed Land	Assessed Building	Assessed Total	Ratio	Year & Remodeled
<a href="#">430 Lewers Street 1505</a>	\$134   \$948   \$0	\$62,200	\$447,000	\$509,200	109%	1976 & 2008

[430 Lewers Street 1505](#) - MLS#: [202415134](#) - Welcome to your Hawaiian dream home in the highly sought-after Aloha Towers! This nicely upgraded, fully furnished, move-in ready, 1 bedroom condo offers a comfortable and exciting lifestyle. This unit features granite countertops in both the kitchen and bathroom, cherry color cabinets, bamboo flooring throughout, and in-suite washer/dryer. Relax and unwind with breathtaking ocean and city views from your spacious lanai. Aloha Towers is pet friendly and has 24-hour security. Amenities include 2 heated pools ( Ewa & DH Towers), whirlpool, sauna, and barbecue areas, ample guest parking and a popular mini-mart on the ground level for your convenience. Experience the best of Waikiki with easy access to beautiful beaches, variety of restaurants, trendy shops, and vibrant entertainment. Don't miss the opportunity to own this slice of paradise in Waikiki! Contact me today! **Region:** Metro **Neighborhood:** Waikiki **Condition:** Excellent **Parking:** Assigned, Covered - 1 **Total Parking:** 1 **View:** City, Mountain, Ocean **Frontage:** Other **Pool:** **Zoning:** X2 - Apartment Precinct **Sale Conditions:** None **Schools:** , , \* [Request Showing](#), [Photos](#), [History](#), [Maps](#), [Deed](#), [Watch List](#), [Tax Info](#)

DOM = Days on Market