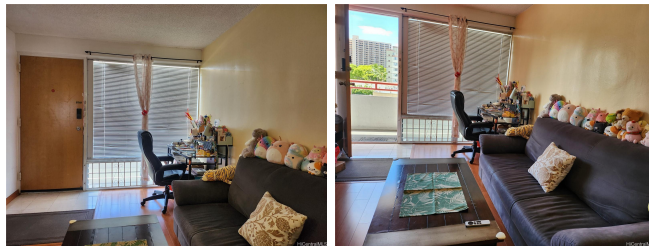


Kalakaua Sands 1670 Kalakaua Avenue Unit 601, Honolulu 96826 * \$349,000

Beds: 1	MLS#: 202415203, FS	Year Built: 1968
Bath: 1/0	Status: Active	Remodeled:
Living Sq. Ft.: 588	List Date & DOM: 06-29-2024 & 18	Total Parking: 1
Land Sq. Ft.: 0	Condition: Excellent	Assessed Value
Lanai Sq. Ft.: 0	Frontage:	Building: \$260,700
Sq. Ft. Other: 0	Tax/Year: \$101/2024	Land: \$88,400
Total Sq. Ft. 588	Neighborhood: Pawaa	Total: \$349,100
Maint./Assoc. \$526 / \$0	Flood Zone : Zone A - Tool	Stories / CPR: 8-14 / No
Parking: Assigned, Covered - 1	Frontage:	
Zoning : 32 - B-2 Community Business Dis	View: City, Other	

Public Remarks: Discover urban tranquility in this charming 1-bedroom corner unit at Kalakaua Sands. Featuring a spacious layout with updated interiors, including a modern kitchen and cozy living area, this unit offers comfort and convenience. Enjoy the vibrant city views and proximity to Waikiki Beach, just a short stroll away. Perfect for those seeking a blend of city living and beachside relaxation. Don't miss out on this opportunity to live in the heart of Honolulu! The Building recently installed a new elevator. **Sale Conditions:** None **Schools:** [Lunalilo](#), [Washington](#), [Kaimuki](#) * [Request Showing](#), [Photos](#), [History](#), [Maps](#), [Deed](#), [Watch List](#), [Tax Info](#)



Address	Price	Bd & Bth	Living / Avg.	Land Avg.	DOM
1670 Kalakaua Avenue 601	\$349,000	1 & 1/0	588 \$594	0 \$inf	18

Address	Tax Maint. Ass.	Assessed Land	Assessed Building	Assessed Total	Ratio	Year & Remodeled
1670 Kalakaua Avenue 601	\$101 \$526 \$0	\$88,400	\$260,700	\$349,100	100%	1968 & NA

[1670 Kalakaua Avenue 601](#) - MLS#: [202415203](#) - Discover urban tranquility in this charming 1-bedroom corner unit at Kalakaua Sands. Featuring a spacious layout with updated interiors, including a modern kitchen and cozy living area, this unit offers comfort and convenience. Enjoy the vibrant city views and proximity to Waikiki Beach, just a short stroll away. Perfect for those seeking a blend of city living and beachside relaxation. Don't miss out on this opportunity to live in the heart of Honolulu! The Building recently installed a new elevator. **Region:** Metro **Neighborhood:** Pawaa **Condition:** Excellent **Parking:** Assigned, Covered - 1 **Total Parking:** 1 **View:** City, Other **Frontage:** **Pool:** **Zoning:** 32 - B-2 Community Business Dis **Sale Conditions:** None **Schools:** [Lunalilo](#), [Washington](#), [Kaimuki](#) * [Request Showing](#), [Photos](#), [History](#), [Maps](#), [Deed](#), [Watch List](#), [Tax Info](#)

DOM = Days on Market