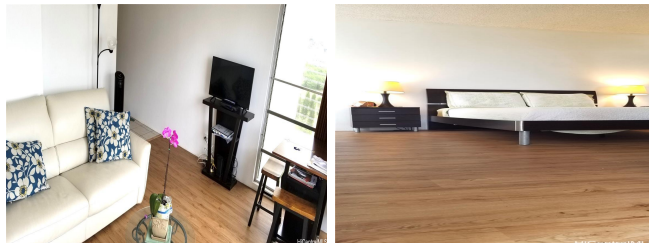


**444 Nahua 444 Nahua Street Unit 2001, Honolulu 96815 \* 444 Nahua \* \$438,888**

Beds: <b>1</b>	MLS#: <b>202415622, FS</b>	Year Built: <b>1976</b>
Bath: <b>1/0</b>	Status: <b>Active</b>	Remodeled: <b>2017</b>
Living Sq. Ft.: <b>529</b>	List Date & DOM: <b>07-08-2024 &amp; 8</b>	Total Parking: <b>2</b>
Land Sq. Ft.: <b>23,348</b>	Condition: <b>Above Average</b>	<a href="#">Assessed Value</a>
Lanai Sq. Ft.: <b>53</b>	Frontage:	Building: <b>\$308,100</b>
Sq. Ft. Other: <b>0</b>	Tax/Year: <b>\$126/2024</b>	Land: <b>\$122,700</b>
Total Sq. Ft. <b>582</b>	Neighborhood: <b>Waikiki</b>	Total: <b>\$430,800</b>
Maint./Assoc. <b>\$941 / \$0</b>	<a href="#">Flood Zone</a> : <b>Zone AE - Tool</b>	Stories / CPR: <b>21+ / No</b>
Parking: <b>Assigned, Covered - 2, Secured Entry, Tandem</b>	Frontage:	
<a href="#">Zoning</a> : <b>X2 - Apartment Precinct</b>	View: <b>Diamond Head, Golf Course, Marina/Canal, Mountain, Sunrise</b>	

**Public Remarks:** Discover the epitome of Waikiki living in this stunning high-floor, corner-end unit with sweeping views of Diamond Head, the lush golf course, and the tranquil Ala Wai Canal. Boasting 2 covered parking stalls (tandem), this residence is perfect for those who appreciate both convenience and luxury. Imagine entertaining guests on the rooftop BBQ terrace while soaking in panoramic sunsets and city lights. Enjoy access to exclusive amenities including a well-equipped gym and relaxing sauna. The monthly HOA fees cover a comprehensive list of utilities such as electricity, high-speed internet, basic cable TV, hot water, and water/sewer, ensuring effortless living. Just steps from Waikiki Beach, The International Market Place, and the vibrant pulse of Waikiki's dining and entertainment scene, this is a rare opportunity to embrace the essence of island paradise. **Sale Conditions:** None **Schools:** [Jefferson](#), [Kaimuki](#), [Kaimuki](#) \* [Request Showing](#), [Photos](#), [History](#), [Maps](#), [Deed](#), [Watch List](#), [Tax Info](#)



Address	Price	Bd & Bth	Living / Avg.	Land   Avg.	Lanai	Occ.	FL	DOM
<a href="#">444 Nahua Street 2001</a>	<b>\$438,888</b>	1 & 1/0	529   \$830	23,348   \$19	53	19%	20	8

Address	Tax   Maint.   Ass.	Assessed Land	Assessed Building	Assessed Total	Ratio	Year & Remodeled
<a href="#">444 Nahua Street 2001</a>	\$126   \$941   \$0	\$122,700	\$308,100	\$430,800	102%	1976 & 2017

[444 Nahua Street 2001](#) - MLS#: [202415622](#) - Discover the epitome of Waikiki living in this stunning high-floor, corner-end unit with sweeping views of Diamond Head, the lush golf course, and the tranquil Ala Wai Canal. Boasting 2 covered parking stalls (tandem), this residence is perfect for those who appreciate both convenience and luxury. Imagine entertaining guests on the rooftop BBQ terrace while soaking in panoramic sunsets and city lights. Enjoy access to exclusive amenities including a well-equipped gym and relaxing sauna. The monthly HOA fees cover a comprehensive list of utilities such as electricity, high-speed internet, basic cable TV, hot water, and water/sewer, ensuring effortless living. Just steps from Waikiki Beach, The International Market Place, and the vibrant pulse of Waikiki's dining and entertainment scene, this is a rare opportunity to embrace the essence of island paradise. **Region:** Metro **Neighborhood:** Waikiki **Condition:** Above Average **Parking:** Assigned, Covered - 2, Secured Entry, Tandem **Total Parking:** 2 **View:** Diamond Head, Golf Course, Marina/Canal, Mountain, Sunrise **Frontage:** **Pool:** **Zoning:** X2 - Apartment Precinct **Sale Conditions:** None **Schools:** [Jefferson](#), [Kaimuki](#), [Kaimuki](#) \* [Request Showing](#), [Photos](#), [History](#), [Maps](#), [Deed](#), [Watch List](#), [Tax Info](#)

DOM = Days on Market, Occ. = Occupancy, FL = Floor Number