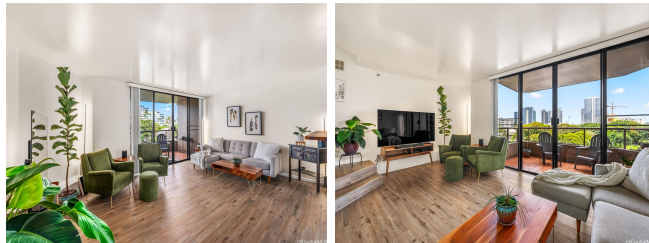


Admiral Thomas Apts 1221 Victoria Street Unit 503, Honolulu 96814 * \$225,000

Beds: 1	MLS#: 202415816, LH	Year Built: 1980
Bath: 1/0	Status: Active	Remodeled: 2023
Living Sq. Ft.: 850	List Date & DOM: 07-09-2024 & 7	Total Parking: 1
Land Sq. Ft.: 0	Condition: Excellent	Assessed Value
Lanai Sq. Ft.: 150	Frontage:	Building: \$421,300
Sq. Ft. Other: 0	Tax/Year: \$113/2024	Land: \$70,200
Total Sq. Ft. 1,000	Neighborhood: Makiki Area	Total: \$491,500
Maint./Assoc. \$1,245 / \$0	Flood Zone : Zone X - Tool	Stories / CPR: One / No
Parking: Covered - 1	Frontage:	
Zoning : 12 - A-2 Medium Density Apartme	View: City	

Public Remarks: This beautifully upgraded 1-bed, 1-bath condo offers stunning park and city views and boasts numerous upgrades, including: new luxury vinyl flooring, completely renovated kitchen with new stainless-steel appliances, new cabinets, custom butcher block countertops, new washer/dryer, resurfaced bathroom cabinets, reglazed tub/shower, and custom lighting (over \$70,000 in upgrades). This condo features a generous 850 sqft interior plus 150 sqft of lanai space, complete with covered parking. Enjoy peaceful, green treetop views from two lanais overlooking Thomas Square Park and the Honolulu skyline. Located in the well-managed, pet-friendly, and secure Admiral Thomas building, residents have access to fantastic amenities including a pool, tennis court, recreation area, security, and guest parking. Prime location, near Straub Hospital, the Honolulu Museum of Art, Blaisdell Center, restaurants and freeway access. Unit is no longer staged & is currently vacant. **Sale Conditions:** None **Schools:** [Kaahumanu](#), [Stevenson](#), [Mckinley](#) * [Request Showing](#), [Photos](#), [History](#), [Maps](#), [Deed](#), [Watch List](#), [Tax Info](#)



Address	Price	Bd & Bth	Living / Avg.	Land Avg.	DOM
1221 Victoria Street 503	\$225,000 LH	1 & 1/0	850 \$265	0 \$inf	7

Address	Tax Maint. Ass.	Assessed Land	Assessed Building	Assessed Total	Ratio	Year & Remodeled
1221 Victoria Street 503	\$113 \$1,245 \$0	\$70,200	\$421,300	\$491,500	46%	1980 & 2023

[1221 Victoria Street 503](#) - MLS#: **202415816** - This beautifully upgraded 1-bed, 1-bath condo offers stunning park and city views and boasts numerous upgrades, including: new luxury vinyl flooring, completely renovated kitchen with new stainless-steel appliances, new cabinets, custom butcher block countertops, new washer/dryer, resurfaced bathroom cabinets, reglazed tub/shower, and custom lighting (over \$70,000 in upgrades). This condo features a generous 850 sqft interior plus 150 sqft of lanai space, complete with covered parking. Enjoy peaceful, green treetop views from two lanais overlooking Thomas Square Park and the Honolulu skyline. Located in the well-managed, pet-friendly, and secure Admiral Thomas building, residents have access to fantastic amenities including a pool, tennis court, recreation area, security, and guest parking. Prime location, near Straub Hospital, the Honolulu Museum of Art, Blaisdell Center, restaurants and freeway access. Unit is no longer staged & is currently vacant. **Region:** Metro **Neighborhood:** Makiki Area **Condition:** Excellent **Parking:** Covered - 1 **Total Parking:** 1 **View:** City **Frontage:** **Pool:** **Zoning:** 12 - A-2 Medium Density Apartme **Sale Conditions:** None **Schools:** [Kaahumanu](#), [Stevenson](#), [Mckinley](#) * [Request Showing](#), [Photos](#), [History](#), [Maps](#), [Deed](#), [Watch List](#), [Tax Info](#)

DOM = Days on Market