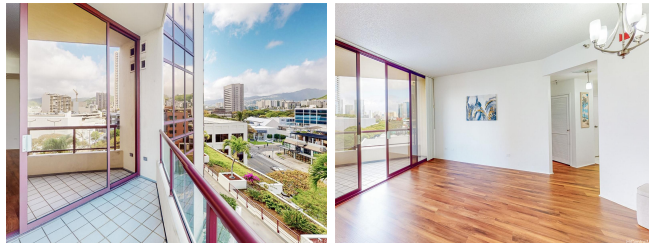


Imperial Plaza 725 Kapiolani Boulevard Unit 806, Honolulu 96813 * \$575,000

Beds: 2	MLS#: 202415922, FS	Year Built: 1991
Bath: 2/0	Status: Active	Remodeled:
Living Sq. Ft.: 911	List Date & DOM: 07-11-2024 & 5	Total Parking: 1
Land Sq. Ft.: 110,294	Condition: Average	Assessed Value
Lanai Sq. Ft.: 0	Frontage:	Building: \$432,700
Sq. Ft. Other: 0	Tax/Year: \$95/2023	Land: \$93,900
Total Sq. Ft. 911	Neighborhood: Kakaako	Total: \$526,600
Maint./Assoc. \$1,330 / \$0	Flood Zone : Zone X - Tool	Stories / CPR: 8-14 / No
Parking: Covered - 1, Guest, Secured Entry, Street	Frontage:	
Zoning : Kak - Kakaako Community Development Project	View: City, Mountain	

Public Remarks: Welcome to your urban oasis at Imperial Plaza! This spacious 2-bedroom, 2-bathroom condo offers stunning views of the city and mountains, creating a serene and picturesque backdrop. The unit features laminated flooring throughout, adding a touch of modern elegance. With an assigned parking stall, convenience is at your doorstep. Imperial Plaza boasts a range of amenities, including a bbq area, pool and sauna recreation area, resident manager, and dog park, providing the total package of relaxation and leisure. Located near parks, commercial areas, schools, and essential services such as the police and fire department, this condo offers the perfect blend of convenience and comfort. Don't miss out on this incredible opportunity to own a piece of urban paradise. Schedule your showing today! **Sale Conditions:** None **Schools:** , , * [Request Showing](#), [Photos](#), [History](#), [Maps](#), [Deed](#), [Watch List](#), [Tax Info](#)



Address	Price	Bd & Bth	Living / Avg.	Land Avg.	DOM
725 Kapiolani Boulevard 806	\$575,000	2 & 2/0	911 \$631	110,294 \$5	5

Address	Tax Maint. Ass.	Assessed Land	Assessed Building	Assessed Total	Ratio	Year & Remodeled
725 Kapiolani Boulevard 806	\$95 \$1,330 \$0	\$93,900	\$432,700	\$526,600	109%	1991 & NA

[725 Kapiolani Boulevard 806](#) - MLS#: [202415922](#) - Welcome to your urban oasis at Imperial Plaza! This spacious 2-bedroom, 2-bathroom condo offers stunning views of the city and mountains, creating a serene and picturesque backdrop. The unit features laminated flooring throughout, adding a touch of modern elegance. With an assigned parking stall, convenience is at your doorstep. Imperial Plaza boasts a range of amenities, including a bbq area, pool and sauna recreation area, resident manager, and dog park, providing the total package of relaxation and leisure. Located near parks, commercial areas, schools, and essential services such as the police and fire department, this condo offers the perfect blend of convenience and comfort. Don't miss out on this incredible opportunity to own a piece of urban paradise. Schedule your showing today!
Region: Metro **Neighborhood:** Kakaako **Condition:** Average **Parking:** Covered - 1, Guest, Secured Entry, Street **Total Parking:** 1 **View:** City, Mountain **Frontage:** **Pool:** **Zoning:** Kak - Kakaako Community Development Project **Sale Conditions:** None **Schools:** , , * [Request Showing](#), [Photos](#), [History](#), [Maps](#), [Deed](#), [Watch List](#), [Tax Info](#)

DOM = Days on Market