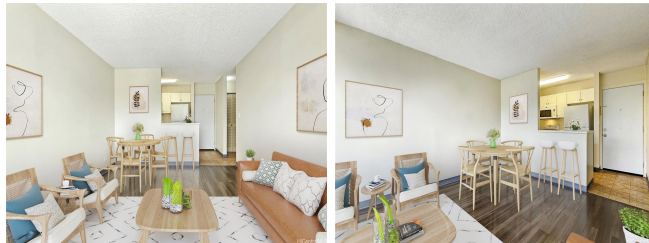


**Piikoi Plaza 725 Piikoi Street Unit 206, Honolulu 96814 \* Piikoi Plaza \* \$399,900**

Beds: <b>1</b>	MLS#: <b>202416075, FS</b>	Year Built: <b>1977</b>
Bath: <b>1/0</b>	Status: <b>Active</b>	Remodeled: <b>2024</b>
Living Sq. Ft.: <b>588</b>	List Date & DOM: <b>07-15-2024 &amp; 1</b>	Total Parking: <b>1</b>
Land Sq. Ft.: <b>17,947</b>	Condition: <b>Excellent</b>	<a href="#">Assessed Value</a>
Lanai Sq. Ft.: <b>38</b>	Frontage: <b>Other</b>	Building: <b>\$316,700</b>
Sq. Ft. Other: <b>0</b>	Tax/Year: <b>\$104/2023</b>	Land: <b>\$61,600</b>
Total Sq. Ft. <b>626</b>	Neighborhood: <b>Ala Moana</b>	Total: <b>\$378,300</b>
Maint./Assoc. <b>\$908 / \$0</b>	<a href="#">Flood Zone</a> : <b>Zone X - Tool</b>	Stories / CPR: <b>One / No</b>
Parking: <b>Assigned, Covered - 1</b>	Frontage: <b>Other</b>	
<a href="#">Zoning</a> : <b>12 - A-2 Medium Density Apartme</b>	View: <b>City, Garden</b>	

**Public Remarks:** Tastefully renovated and move-in ready 1-bedroom, 1-bathroom corner unit in Piikoi Plaza, centrally located in town. A rare fee simple ownership opportunity in this building, perfect for first-time homebuyers. The unit features new modern vinyl flooring in the living area and bedroom, complemented by fresh paint throughout. Additions in the kitchen include new refrigerator, sink, and disposal. The bathroom has been updated with new fixtures, with ample closet space available in the bathroom, hallway, and bedroom. Also, included are an in-unit washer/dryer, window AC units in both the living area and bedroom, assigned parking in a gated garage, and a separate storage unit. The building offers enhanced security with video surveillance, secured fob access to the building and elevator, an on-site resident manager, and a community pool. Relax poolside or enjoy the breeze and lush city views from your private lanai. Located within proximity to all of Honolulu's urban attractions. \*Photos have been virtually staged. **Sale Conditions:** None **Schools:** [Kaahumanu](#), [Stevenson](#), [Mckinley](#) \* [Request Showing](#), [Photos](#), [History](#), [Maps](#), [Deed](#), [Watch List](#), [Tax Info](#)



Address	Price	Bd & Bth	Living / Avg.	Land   Avg.	Lanai	Occ.	FL	DOM
<a href="#">725 Piikoi Street 206</a>	<a href="#">\$399,900</a>	1 & 1/0	588   \$680	17,947   \$22	38	41%	2	1

Address	Tax   Maint.   Ass.	Assessed Land	Assessed Building	Assessed Total	Ratio	Year & Remodeled
<a href="#">725 Piikoi Street 206</a>	\$104   \$908   \$0	\$61,600	\$316,700	\$378,300	106%	1977 & 2024

[725 Piikoi Street 206](#) - MLS#: [202416075](#) - Tastefully renovated and move-in ready 1-bedroom, 1-bathroom corner unit in Piikoi Plaza, centrally located in town. A rare fee simple ownership opportunity in this building, perfect for first-time homebuyers. The unit features new modern vinyl flooring in the living area and bedroom, complemented by fresh paint throughout. Additions in the kitchen include new refrigerator, sink, and disposal. The bathroom has been updated with new fixtures, with ample closet space available in the bathroom, hallway, and bedroom. Also, included are an in-unit washer/dryer, window AC units in both the living area and bedroom, assigned parking in a gated garage, and a separate storage unit. The building offers enhanced security with video surveillance, secured fob access to the building and elevator, an on-site resident manager, and a community pool. Relax poolside or enjoy the breeze and lush city views from your private lanai. Located within proximity to all of Honolulu's urban attractions. \*Photos have been virtually staged. **Region:** Metro **Neighborhood:** Ala Moana **Condition:** Excellent **Parking:** Assigned, Covered - 1 **Total Parking:** 1 **View:** City, Garden **Frontage:** Other **Pool:** **Zoning:** 12 - A-2 Medium Density Apartme **Sale Conditions:** None **Schools:** [Kaahumanu](#), [Stevenson](#), [Mckinley](#) \* [Request Showing](#), [Photos](#), [History](#), [Maps](#), [Deed](#), [Watch List](#), [Tax Info](#)

DOM = Days on Market, Occ. = Occupancy, FL = Floor Number