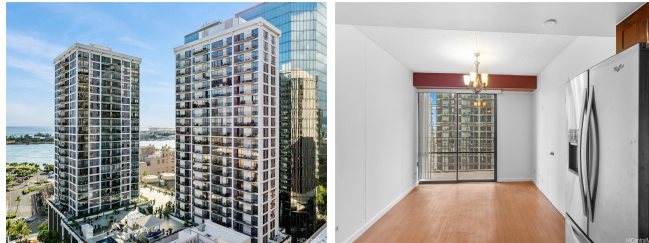


**Harbor Square 225 Queen Street Unit 22E, Honolulu 96813 \* Harbor Square \* \$399,000**

|   |   |                                |
|---|---|--------------------------------|
| Beds: <b>2</b>  | MLS#: <b>202416110, FS</b>                        | Year Built: <b>1971</b>        |
| Bath: <b>2/0</b>  | Status: <b>Active</b>                             | Remodeled:                     |
| Living Sq. Ft.: <b>604</b>                                      | List Date & DOM: <b>07-14-2024 &amp; 2</b>        | Total Parking: <b>0</b>        |
| Land Sq. Ft.: <b>67,910</b>                                     | Condition: <b>Average</b>                         | <a href="#">Assessed Value</a> |
| Lanai Sq. Ft.: <b>121</b>                                       | Frontage:   | Building: <b>\$375,200</b>     |
| Sq. Ft. Other: <b>0</b>   | Tax/Year: <b>\$75/2024</b>                        | Land: <b>\$40,500</b>          |
| Total Sq. Ft. <b>725</b>  | Neighborhood: <b>Downtown</b>                     | Total: <b>\$415,700</b>        |
| Maint./Assoc. <b>\$1,128 / \$0</b>                              | <a href="#">Flood Zone</a> : <b>Zone X - Tool</b> | Stories / CPR: <b>One / No</b> |
| Parking: <b>None, Guest</b>                                     | Frontage:   |                                |
| <a href="#">Zoning</a> : <b>34 - BMX-4 Central Business Mix</b> | View: <b>City, Ocean</b>                          |                                |

**Public Remarks:** Welcome to Harbor Square! Discover the perfect blend of live, work, and play in this 2-bedroom, 2-bathroom condo situated in the heart of downtown Honolulu. Designed with an efficient layout, each space within the condo is thoughtfully utilized to maximize comfort and convenience. Stay comfortable year-round with central air conditioning. Plus, the maintenance fee covers electricity, internet, and cable TV, making this a truly hassle-free living experience. Parking is a breeze with monthly options available directly through the building. Enjoy the ease of living in a prime location where everything you need is just a short stroll away. Whether you're heading to the financial district for work, or indulging in the nearby array of restaurants, shops, and nightlife, you'll appreciate the walkability of this neighborhood. **Sale Conditions:** None **Schools:** , , \* [Request Showing](#), [Photos](#), [History](#), [Maps](#), [Deed](#), [Watch List](#), [Tax Info](#)



| Address                              | Price                     | Bd & Bth | Living / Avg. | Land   Avg.  | Lanai | Occ. | FL | DOM |
|--------------------------------------|---------------------------|----------|---------------|--------------|-------|------|----|-----|
| <a href="#">225 Queen Street 22E</a> | <a href="#">\$399,000</a> | 2 & 2/0  | 604   \$661   | 67,910   \$6 | 121   | 57%  | 22 | 2   |

| Address                              | Tax   Maint.   Ass.  | Assessed Land | Assessed Building | Assessed Total | Ratio | Year & Remodeled |
|--------------------------------------|----------------------|---------------|-------------------|----------------|-------|------------------|
| <a href="#">225 Queen Street 22E</a> | \$75   \$1,128   \$0 | \$40,500      | \$375,200         | \$415,700      | 96%   | 1971 & NA        |

[225 Queen Street 22E](#) - MLS#: [202416110](#) - Welcome to Harbor Square! Discover the perfect blend of live, work, and play in this 2-bedroom, 2-bathroom condo situated in the heart of downtown Honolulu. Designed with an efficient layout, each space within the condo is thoughtfully utilized to maximize comfort and convenience. Stay comfortable year-round with central air conditioning. Plus, the maintenance fee covers electricity, internet, and cable TV, making this a truly hassle-free living experience. Parking is a breeze with monthly options available directly through the building. Enjoy the ease of living in a prime location where everything you need is just a short stroll away. Whether you're heading to the financial district for work, or indulging in the nearby array of restaurants, shops, and nightlife, you'll appreciate the walkability of this neighborhood. **Region:** Metro **Neighborhood:** Downtown **Condition:** Average **Parking:** None, Guest **Total Parking:** 0 **View:** City, Ocean **Frontage:** **Pool:** **Zoning:** 34 - BMX-4 Central Business Mix **Sale Conditions:** None **Schools:** , , \* [Request Showing](#), [Photos](#), [History](#), [Maps](#), [Deed](#), [Watch List](#), [Tax Info](#)

DOM = Days on Market, Occ. = Occupancy, FL = Floor Number