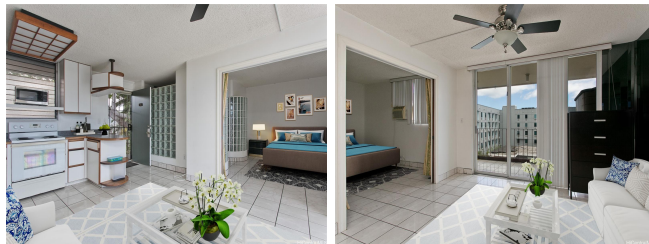


**University Court Apts 1914 University Avenue Unit 413, Honolulu 96822 \* University Court**

**Apts \* \$359,000**

Bed(s): <b>1</b>	MLS#: <b>202416233, FS</b>	Year Built: <b>1963</b>
Bath: <b>1/0</b>	Status: <b>Active</b>	Remodeled:
Living Sq. Ft.: <b>493</b>	List Date & DOM: <b>07-16-2024 &amp; 1</b>	Total Parking: <b>1</b>
Land Sq. Ft.: <b>17,119</b>	Condition: <b>Above Average</b>	<a href="#">Assessed Value</a>
Lanai Sq. Ft.: <b>75</b>	Frontage:	Building: <b>\$213,500</b>
Sq. Ft. Other: <b>0</b>	Tax/Year: <b>\$91/2024</b>	Land: <b>\$98,000</b>
Total Sq. Ft. <b>568</b>	Neighborhood: <b>Manoa-lower</b>	Total: <b>\$311,500</b>
Maint./Assoc. <b>\$472 / \$0</b>	<a href="#">Flood Zone</a> : <b>Zone X - Tool</b>	Stories / CPR: <b>4-7 / No</b>
Parking: <b>Assigned, Covered - 1</b>	Frontage:	
<a href="#">Zoning</a> : <b>05 - R-5 Residential District</b>	View: <b>City</b>	

**Public Remarks:** Convenient and within close proximity to UH Manoa, breezy top floor corner one(1) bedroom unit with spacious lanai and view of Honolulu skyline, plus assigned covered parking stall. With the latter, there are only a few units in this project with an assigned parking stall. Updated kitchen and bath. Large communal courtyard supports the open airy character of this project. Common laundry. Bike storage. **Sale Conditions:** None **Schools:** [Noelani](#), [Stevenson](#), [Roosevelt](#) \* [Request Showing](#), [Photos](#), [History](#), [Maps](#), [Deed](#), [Watch List](#), [Tax Info](#)



Address	Price	Bd & Bth	Living / Avg.	Land   Avg.	Lanai	Occ.	FL	DOM
<a href="#">1914 University Avenue 413</a>	<a href="#">\$359,000</a>	1 & 1/0	493   \$728	17,119   \$21	75	24%	4	1

Address	Tax   Maint.   Ass.	Assessed Land	Assessed Building	Assessed Total	Ratio	Year & Remodeled
<a href="#">1914 University Avenue 413</a>	\$91   \$472   \$0	\$98,000	\$213,500	\$311,500	115%	1963 & NA

[1914 University Avenue 413](#) - MLS#: [202416233](#) - Convenient and within close proximity to UH Manoa, breezy top floor corner one(1) bedroom unit with spacious lanai and view of Honolulu skyline, plus assigned covered parking stall. With the latter, there are only a few units in this project with an assigned parking stall. Updated kitchen and bath. Large communal courtyard supports the open airy character of this project. Common laundry. Bike storage. **Region:** Metro **Neighborhood:** Manoa-lower **Condition:** Above Average **Parking:** Assigned, Covered - 1 **Total Parking:** 1 **View:** City **Frontage:** **Pool:** **Zoning:** 05 - R-5 Residential District **Sale Conditions:** None **Schools:** [Noelani](#), [Stevenson](#), [Roosevelt](#) \* [Request Showing](#), [Photos](#), [History](#), [Maps](#), [Deed](#), [Watch List](#), [Tax Info](#)

DOM = Days on Market, Occ. = Occupancy, FL = Floor Number