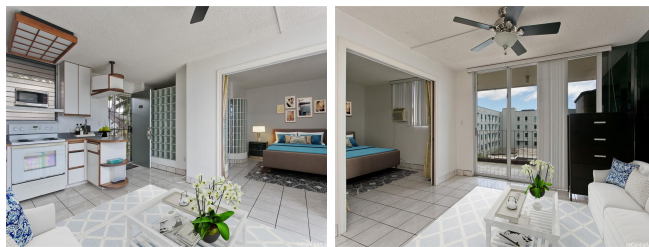


University Court Apts 1914 University Avenue Unit 413, Honolulu 96822 * \$359,000

Beds: 1	MLS#: 202416233, FS	Year Built: 1963
Bath: 1/0	Status: Active	Remodeled:
Living Sq. Ft.: 493	List Date & DOM: 07-16-2024 & 1	Total Parking: 1
Land Sq. Ft.: 17,119	Condition: Above Average	Assessed Value
Lanai Sq. Ft.: 75	Frontage:	Building: \$213,500
Sq. Ft. Other: 0	Tax/Year: \$91/2024	Land: \$98,000
Total Sq. Ft. 568	Neighborhood: Manoa-lower	Total: \$311,500
Maint./Assoc. \$472 / \$0	Flood Zone : Zone X - Tool	Stories / CPR: 4-7 / No
Parking: Assigned, Covered - 1	Frontage:	
Zoning : 05 - R-5 Residential District	View: City	

Public Remarks: Convenient and within close proximity to UH Manoa, breezy top floor corner one(1) bedroom unit with spacious lanai and view of Honolulu skyline, plus assigned covered parking stall. With the latter, there are only a few units in this project with an assigned parking stall. Updated kitchen and bath. Large communal courtyard supports the open airy character of this project. Common laundry. Bike storage. **Sale Conditions:** None **Schools:** [Noelani](#), [Stevenson](#), [Roosevelt](#) * [Request Showing](#), [Photos](#), [History](#), [Maps](#), [Deed](#), [Watch List](#), [Tax Info](#)



Address	Price	Bd & Bth	Living / Avg.	Land Avg.	DOM
1914 University Avenue 413	\$359,000	1 & 1/0	493 \$728	17,119 \$21	1

Address	Tax Maint. Ass.	Assessed Land	Assessed Building	Assessed Total	Ratio	Year & Remodeled
1914 University Avenue 413	\$91 \$472 \$0	\$98,000	\$213,500	\$311,500	115%	1963 & NA

[1914 University Avenue 413](#) - MLS#: [202416233](#) - Convenient and within close proximity to UH Manoa, breezy top floor corner one(1) bedroom unit with spacious lanai and view of Honolulu skyline, plus assigned covered parking stall. With the latter, there are only a few units in this project with an assigned parking stall. Updated kitchen and bath. Large communal courtyard supports the open airy character of this project. Common laundry. Bike storage. **Region:** Metro **Neighborhood:** Manoa-lower **Condition:** Above Average **Parking:** Assigned, Covered - 1 **Total Parking:** 1 **View:** City **Frontage:** **Pool:** **Zoning:** 05 - R-5 Residential District **Sale Conditions:** None **Schools:** [Noelani](#), [Stevenson](#), [Roosevelt](#) * [Request Showing](#), [Photos](#), [History](#), [Maps](#), [Deed](#), [Watch List](#), [Tax Info](#)

DOM = Days on Market