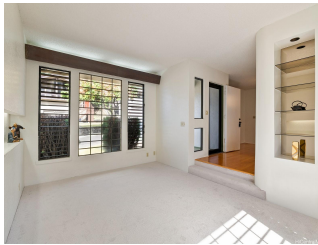


837 Kulani Street, Honolulu 96825 * * \$1,395,000

Beds: 3	MLS#: 202416278, FS	Year Built: 1984
Bath: 2/0	Status: Active	Remodeled:
Living Sq. Ft.: 1,533	List Date & DOM: 07-16-2024 &	Total Parking: 2
Land Sq. Ft.: 5,975	Condition: Above Average	Assessed Value
Lanai Sq. Ft.: 180	Frontage:	Building: \$206,800
Sq. Ft. Other: 0	Tax/Year: \$316/2023	Land: \$955,500
Total Sq. Ft. 1,713	Neighborhood: Hahaione-upper	Total: \$1,162,300
Maint./Assoc. \$0 / \$0	Flood Zone : Zone D - Tool	Stories / CPR: One / No
Parking: 2 Car, Driveway, Garage	Frontage:	
Zoning : 05 - R-5 Residential District	View: Mountain	

Public Remarks: This is a custom, mostly single level home built in 1984. Freshly painted interior with new carpets and padding. Baths were renovated for easy access to showers and an 'ofuro' bathtub. Lots of fine detail like decorative pot niches, lighted and recessed walls shelves in living room and main bedroom. Sunken living room with views of the mountains. Large formal dining room. Large, extra wide, enclosed garage with lots of storage closets and shelves. Separate laundry room. Formal entry from outside leads onto hardwood floors and you are greeted by a decorative alcove for scrolls or flower arrangements. Fantastic location in the Hahaione school district. **Sale Conditions:** None **Schools:** [Hahaione](#), [Niu Valley](#), [Kaiser](#) * [Request Showing](#), [Photos](#), [History](#), [Maps](#), [Deed](#), [Watch List](#), [Tax Info](#)



Address	Price	Bd & Bth	Living / Avg.	Land Avg.	Lanai	Occ.	FL	DOM
837 Kulani Street	\$1,395,000	3 & 2/0	1,533 \$910	5,975 \$233	180	0%	0	0

Address	Tax Maint. Ass.	Assessed Land	Assessed Building	Assessed Total	Ratio	Year & Remodeled
837 Kulani Street	\$316 \$0 \$0	\$955,500	\$206,800	\$1,162,300	120%	1984 & NA

[837 Kulani Street](#) - MLS#: [202416278](#) - This is a custom, mostly single level home built in 1984. Freshly painted interior with new carpets and padding. Baths were renovated for easy access to showers and an 'ofuro' bathtub. Lots of fine detail like decorative pot niches, lighted and recessed walls shelves in living room and main bedroom. Sunken living room with views of the mountains. Large formal dining room. Large, extra wide, enclosed garage with lots of storage closets and shelves. Separate laundry room. Formal entry from outside leads onto hardwood floors and you are greeted by a decorative alcove for scrolls or flower arrangements. Fantastic location in the Hahaione school district. **Region:** Hawaii Kai **Neighborhood:** Hahaione-upper **Condition:** Above Average **Parking:** 2 Car, Driveway, Garage **Total Parking:** 2 **View:** Mountain **Frontage:** Pool: None **Zoning:** 05 - R-5 Residential District **Sale Conditions:** None **Schools:** [Hahaione](#), [Niu Valley](#), [Kaiser](#) * [Request Showing](#), [Photos](#), [History](#), [Maps](#), [Deed](#), [Watch List](#), [Tax Info](#)

DOM = Days on Market, Occ. = Occupancy, FL = Floor Number