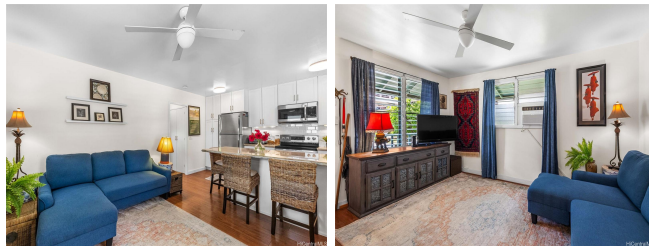


**541 Lauiki 541 Lauiki Street Unit 3, Honolulu 96826 \* 541 Lauiki \* \$363,000**

Beds: <b>1</b>	MLS#: <b>202416332, FS</b>	Year Built: <b>1956</b>
Bath: <b>1/0</b>	Status: <b>Active</b>	Remodeled:
Living Sq. Ft.: <b>500</b>	List Date & DOM: <b>07-17-2024 &amp;</b>	Total Parking: <b>1</b>
Land Sq. Ft.: <b>0</b>	Condition: <b>Excellent</b>	<a href="#">Assessed Value</a>
Lanai Sq. Ft.: <b>78</b>	Frontage:	Building: <b>\$129,600</b>
Sq. Ft. Other: <b>0</b>	Tax/Year: <b>\$93/2024</b>	Land: <b>\$233,500</b>
Total Sq. Ft. <b>578</b>	Neighborhood: <b>Kapiolani</b>	Total: <b>\$363,100</b>
Maint./Assoc. <b>\$465 / \$0</b>	<a href="#">Flood Zone</a> : <b>Zone X - Tool</b>	Stories / CPR: <b>Two / No</b>
Parking: <b>Open - 1, Street</b>	Frontage:	
<a href="#">Zoning</a> : <b>13 - A-3 High Density Apartment</b>	View: <b>City, Mountain</b>	

**Public Remarks:** This rarely available unit is truly a must-see for buyers searching for something located in town that offers the best of both worlds: privacy and convenience. Enter your corner unit through your private entrance as you come home to a blend of charm, cool breezes and natural light. This stylish unit comes with a new washing machine and recent upgrades. Take a short drive to the University of Hawaii, Waikiki and the surrounding areas. Whether you are looking for a home for yourself or rental income, this unit is the one! Don't miss out on this opportunity! **Sale Conditions:** None **Schools:** , , \* [Request Showing](#), [Photos](#), [History](#), [Maps](#), [Deed](#), [Watch List](#), [Tax Info](#)



Address	Price	Bd & Bth	Living / Avg.	Land   Avg.	Lanai	Occ.	FL	DOM
<a href="#">541 Lauiki Street 3</a>	<a href="#">\$363,000</a>	1 & 1/0	500   \$726	0   \$inf	78	50%	2	0

Address	Tax   Maint.   Ass.	Assessed Land	Assessed Building	Assessed Total	Ratio	Year & Remodeled
<a href="#">541 Lauiki Street 3</a>	\$93   \$465   \$0	\$233,500	\$129,600	\$363,100	100%	1956 & NA

[541 Lauiki Street 3](#) - MLS#: [202416332](#) - This rarely available unit is truly a must-see for buyers searching for something located in town that offers the best of both worlds: privacy and convenience. Enter your corner unit through your private entrance as you come home to a blend of charm, cool breezes and natural light. This stylish unit comes with a new washing machine and recent upgrades. Take a short drive to the University of Hawaii, Waikiki and the surrounding areas. Whether you are looking for a home for yourself or rental income, this unit is the one! Don't miss out on this opportunity! **Region:** Metro **Neighborhood:** Kapiolani **Condition:** Excellent **Parking:** Open - 1, Street **Total Parking:** 1 **View:** City, Mountain **Frontage:** Pool: **Zoning:** 13 - A-3 High Density Apartment **Sale Conditions:** None **Schools:** , , \* [Request Showing](#), [Photos](#), [History](#), [Maps](#), [Deed](#), [Watch List](#), [Tax Info](#)

DOM = Days on Market, Occ. = Occupancy, FL = Floor Number