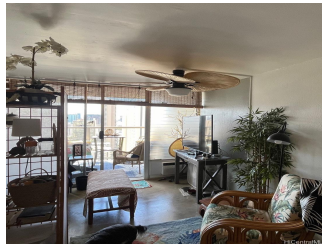


Island Colony 445 Seaside Avenue Unit 3014, Honolulu 96815 * Island Colony * \$385,000

Beds: 0	MLS#: 202416346, FS	Year Built: 1979
Bath: 1/0	Status: Active	Remodeled:
Living Sq. Ft.: 316	List Date & DOM: 07-17-2024 & 10	Total Parking: 0
Land Sq. Ft.: 0	Condition: Above Average	Assessed Value
Lanai Sq. Ft.: 104	Frontage:	Building: \$292,700
Sq. Ft. Other: 0	Tax/Year: \$97/2023	Land: \$56,700
Total Sq. Ft. 420	Neighborhood: Waikiki	Total: \$349,400
Maint./Assoc. \$504 / \$0	Flood Zone : Zone AE - Tool	Stories / CPR: 21+ / No
Parking: None	Frontage:	
Zoning : X2 - Apartment Precinct	View: Ocean	

Public Remarks: Must see this unique studio that looks like a 1 bedroom. Tropical interior with beautiful ceilings fans, 104 sq. ft. balcony lets you enjoy all Hawaii has to offer. Cozy bedroom area, useful kitchenette with full size fridge, the living area with convertible loveseat sofa/sleeper. Spacious balcony offers panoramic views from the mountains to the ocean. Watch beautiful sunsets over the ocean, outrigger canoe races in the canal & fireworks from the Hilton. The association just replaced the plumbing pipes at the Island Colony, inside the condo and in the walls. which is huge benefit to a new owner. Island Colony is located just 2 blocks to world famous Waikiki Beach. It is also close to Royal Hawaiian Shopping Center & International Market, restaurants, bank, post office, bus stop, Biki bike stations. At Island Colony you can enjoy the pool, sauna, jacuzzi, gym, koi pond, convenience store, barbeque grills, laundry & on site restaurant. It can't get much better than this. **Sale Conditions:** None **Schools:** , , * [Request Showing](#), [Photos](#), [History](#), [Maps](#), [Deed](#), [Watch List](#), [Tax Info](#)



Address	Price	Bd & Bth	Living / Avg.	Land Avg.	Lanai	Occ.	FL	DOM
445 Seaside Avenue 3014	\$385,000	0 & 1/0	316 \$1,218	0 \$inf	104	10%	30	10

Address	Tax Maint. Ass.	Assessed Land	Assessed Building	Assessed Total	Ratio	Year & Remodeled
445 Seaside Avenue 3014	\$97 \$504 \$0	\$56,700	\$292,700	\$349,400	110%	1979 & NA

[445 Seaside Avenue 3014](#) - MLS#: [202416346](#) - Must see this unique studio that looks like a 1 bedroom. Tropical interior with beautiful ceilings fans, 104 sq. ft. balcony lets you enjoy all Hawaii has to offer. Cozy bedroom area, useful kitchenette with full size fridge, the living area with convertible loveseat sofa/sleeper. Spacious balcony offers panoramic views from the mountains to the ocean. Watch beautiful sunsets over the ocean, outrigger canoe races in the canal & fireworks from the Hilton. The association just replaced the plumbing pipes at the Island Colony, inside the condo and in the walls. which is huge benefit to a new owner. Island Colony is located just 2 blocks to world famous Waikiki Beach. It is also close to Royal Hawaiian Shopping Center & International Market, restaurants, bank, post office, bus stop, Biki bike stations. At Island Colony you can enjoy the pool, sauna, jacuzzi, gym, koi pond, convenience store, barbeque grills, laundry & on site restaurant. It can't get much better than this. **Region:** Metro **Neighborhood:** Waikiki **Condition:** Above Average **Parking:** None **Total Parking:** 0 **View:** Ocean **Frontage:** Pool: **Zoning:** X2 - Apartment Precinct **Sale Conditions:** None **Schools:** , , * [Request Showing](#), [Photos](#), [History](#), [Maps](#), [Deed](#), [Watch List](#), [Tax Info](#)

DOM = Days on Market, Occ. = Occupancy, FL = Floor Number