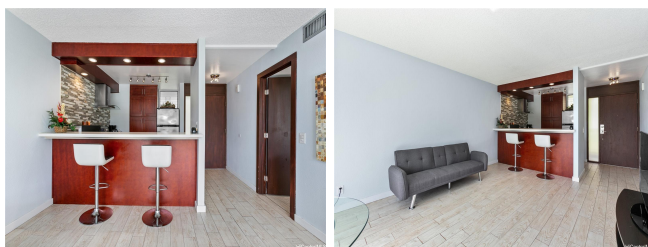


**Makaha Valley Towers 84-680 Kili Drive Unit 1310, Waianae 96792 \* Makaha Valley Towers**

**\* \$295,000**

Bed: <b>1</b>	MLS#: <b>202416351, FS</b>	Year Built: <b>1970</b>
Bath: <b>1/0</b>	Status: <b>Active</b>	Remodeled:
Living Sq. Ft.: <b>680</b>	List Date & DOM: <b>07-17-2024 &amp;</b>	Total Parking: <b>1</b>
Land Sq. Ft.: <b>612,759</b>	Condition: <b>Excellent</b>	<a href="#">Assessed Value</a>
Lanai Sq. Ft.: <b>0</b>	Frontage:	Building: <b>\$230,200</b>
Sq. Ft. Other: <b>0</b>	Tax/Year: <b>\$41/2023</b>	Land: <b>\$31,600</b>
Total Sq. Ft. <b>680</b>	Neighborhood: <b>Makaha</b>	Total: <b>\$261,800</b>
Maint./Assoc. <b>\$1,065 / \$0</b>	<a href="#">Flood Zone</a> : <b>Zone D - Tool</b>	Stories / CPR: <b>8-14 / No</b>
Parking: <b>Unassigned</b>	Frontage:	
<a href="#">Zoning</a> : <b>12 - A-2 Medium Density Apartme</b>	View: <b>Garden, Mountain, Ocean, Sunrise</b>	

**Public Remarks:** Nestled between the Waianae Mountains and the Pacific Ocean, this remodeled 1-bed, 1-bath condo offers luxury & natural beauty. Enjoy breathtaking views and modern elegance with an open-concept kitchen featuring custom Corian countertops, a sleek glass backsplash, and high-end Whirlpool appliances. Elegant ceramic tile flooring flows throughout, and a luxurious stand-up tiled glass door shower elevates your daily routine. Fully furnished, this condo is move-in ready for your island dream life. Relax with 24-hour security in this gated community, offering lush tropical surroundings, a heated pool, and BBQ facilities. Maintenance fees cover all utilities, simplifying your living experience. Immerse yourself in the beauty of Makaha Valley, where peacocks add a touch of magic to your day. Enjoy the tranquility of a secluded paradise with the convenience of nearby amenities. From pristine beaches to hiking trails, Makaha Valley offers endless adventure and relaxation. Shopping, dining, and entertainment are all within easy reach, balancing seclusion and accessibility. Don't walk—run for this best-valued property in this community. Call now to make this paradise your new home **Sale Conditions:** None **Schools:** , , \* [Request Showing](#), [Photos](#), [History](#), [Maps](#), [Deed](#), [Watch List](#), [Tax Info](#)



Address	Price	Bd & Bth	Living / Avg.	Land   Avg.	Lanai	Occ.	FL	DOM
<a href="#">84-680 Kili Drive 1310</a>	<a href="#">\$295,000</a>	1 & 1/0	680   \$434	612,759   \$0	0	36%	13	0

Address	Tax   Maint.   Ass.	Assessed Land	Assessed Building	Assessed Total	Ratio	Year & Remodeled
<a href="#">84-680 Kili Drive 1310</a>	\$41   \$1,065   \$0	\$31,600	\$230,200	\$261,800	113%	1970 & NA

[84-680 Kili Drive 1310](#) - MLS#: [202416351](#) - Nestled between the Waianae Mountains and the Pacific Ocean, this remodeled 1-bed, 1-bath condo offers luxury & natural beauty. Enjoy breathtaking views and modern elegance with an open-concept kitchen featuring custom Corian countertops, a sleek glass backsplash, and high-end Whirlpool appliances. Elegant ceramic tile flooring flows throughout, and a luxurious stand-up tiled glass door shower elevates your daily routine. Fully furnished, this condo is move-in ready for your island dream life. Relax with 24-hour security in this gated community, offering lush tropical surroundings, a heated pool, and BBQ facilities. Maintenance fees cover all utilities, simplifying your living experience. Immerse yourself in the beauty of Makaha Valley, where peacocks add a touch of magic to your day. Enjoy the tranquility of a secluded paradise with the convenience of nearby amenities. From pristine beaches to hiking trails, Makaha Valley offers endless adventure and relaxation. Shopping, dining, and entertainment are all within easy reach, balancing seclusion and accessibility. Don't walk—run for this best-valued property in this community. Call now to make this paradise your new home **Region:** Leeward **Neighborhood:** Makaha **Condition:** Excellent **Parking:** Unassigned **Total Parking:** 1 **View:** Garden, Mountain, Ocean, Sunrise **Frontage:** **Pool:** **Zoning:** 12 - A-2 Medium Density Apartme **Sale Conditions:** None **Schools:** , , \* [Request Showing](#), [Photos](#), [History](#), [Maps](#), [Deed](#), [Watch List](#), [Tax Info](#)

DOM = Days on Market, Occ. = Occupancy, FL = Floor Number