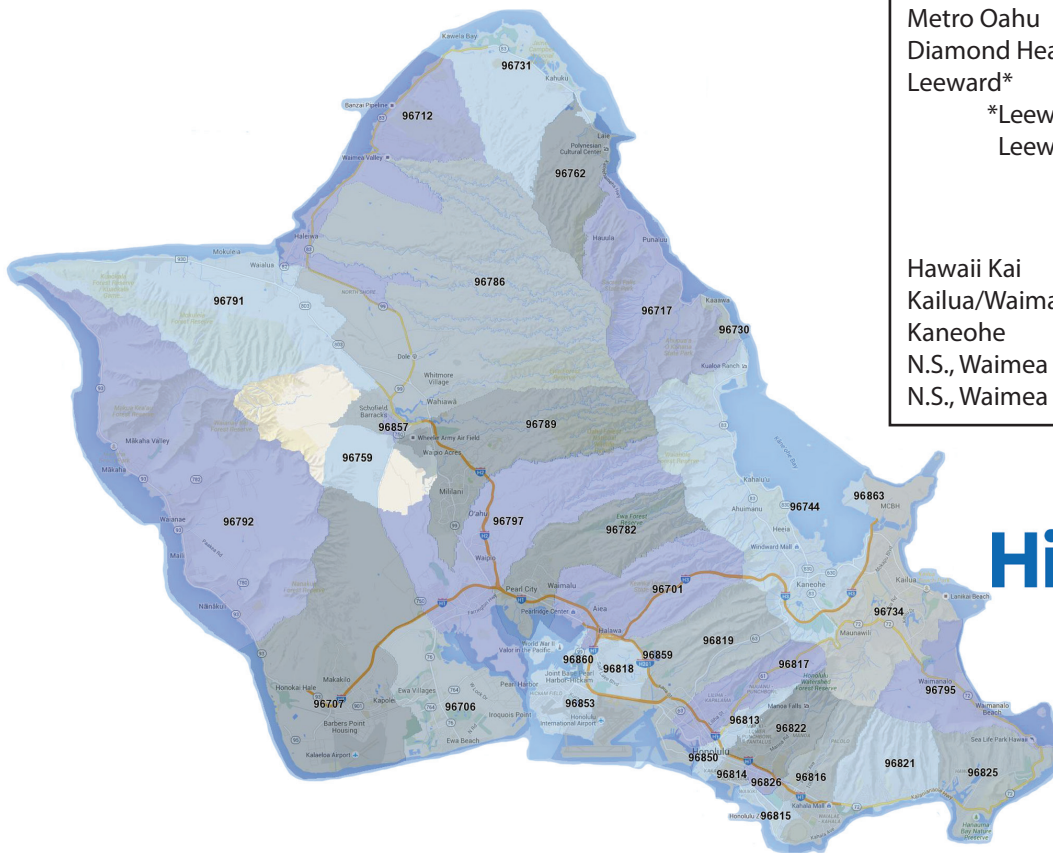


OAHU BROKER'S OPEN SCHEDULE



WEDNESDAY

Metro Oahu 9:30 a.m. - 11:30 a.m.
 Diamond Head 9:30 a.m. - 11:30 a.m.
 Leeward* 10:30 a.m. - 12:30 p.m.
 *Leeward East: 2nd & 4th Wednesdays
 Leeward West: 1st & 3rd Wednesdays

THURSDAY

Hawaii Kai 9:30 a.m. - 11:30 a.m.
 Kailua/Waimanalo 9:30 a.m. - 11:30 a.m.
 Kaneohe 10:30 a.m. - 12:30 p.m.
 N.S., Waimea - Punaluu 1 p.m. - 3 p.m.
 N.S., Waimea - Mokuleia 2 p.m. - 4 p.m.



EAST OAHU REGIONAL DISTRICT

- 96816** St. Louis Heights, Palolo, Kapahulu, Kaimuki, Diamond Head, Maunalani Heights, Waialae- Kahala, Kahala
- 96821** Waialae Nui Rdge, Waialae Iki, Kalani Iki, Aina Haina, Wailupe, Niu Valley, Kuliouou
- 96825** Waialae Iki Ridge, Niu Valley, Kuliouou, Hawaii Kai, Haunama Bay, Sandy Beach

NORTH SHORE OAHU REGIONAL DISTRICT

- 96712** Waialua, Haleiwa, North Shore, Kawailoa, Waimea Bay, Pupukea, Sunset Beach
- 96717** Waialua, Hauula, Punaluu
- 96731** Kuilima, Kahuku, Malaekahana
- 96762** Malaekahana, Kahuku, Laie, Hauula
- 96791** Mokuleia, Waialua, Paalaakai, Metcalf Acres

METRO OAHU REGIONAL DISTRICT

- 96813** Nuuanu, Chinatown, Downtown, Punchbowl, Pauoa, Makiki, Pacific Heights, Kinau,

METRO OAHU REGIONAL DISTRICT

- Ward, Kakaako, Ala Moana, Kapiolani, Moiliili, Waikiki
- 96814** McCully (Ward Ave. - Kalakaua Ave.), Punchbowl, Pawaa, Makiki, Kapio, Kinau, Ward, Kakaako, Holiday Mart, Ala Moana, Waikiki
- 96815** Holiday Mart, Ala Moana , Waikiki, Kapahulu, Diamond Head
- 96817** Kalihi, Dillingham, Palama, Chinatown, Downtown, Alewa, Kapalama, Liliha, Kuakini, Makiki, Nuuanu, Kamehameha Heights, Dowsett, Old Pali, Puunui
- 96818** Halawa, Salt Lake, Aliamanu, Foster Village
- 96819** Salt Lake, Moanalua, Moanalua Gardens, Moanalua Valley, Kalihi Valley, Kapalama
- 96822** Makiki, Punchbowl, Punahou, Manoa, Ala Moana, Kapiolani, Moiliili
- 96826** Makiki, Punahou, Kapiolani, Manoa, McCully, Pawaa, Moiliili, Kapahulu, St. Louis, University, Waikiki, Waialae Nui Valley, Diamond Head

WINDWARD OAHU REGIONAL DISTRICT

- 96730** Kaaawa, Kualoha
- 96734** Kailua
- 96744** Kaneohe
- 96795** Waimanalo

LEeward OAHU REGIONAL DISTRICT: EAST

- 96701** Aiea
- 96782** Pearl City
- 96786** Wahiawa
- 96789** Mililani Town, Mililani Mauka, Laulani Valley
- 96797** Waipio

LEeward OAHU REGIONAL DISTRICT: WEST

- 96706** Ewa, Ewa Beach
- 96707** Ko Olina, Campbell Ind. Park, Makakilo, Kapolei, Ewa
- 96792** Makaha, Maili, Nanakuli, Waianae, Lualualei, Pokai Bay
- 96797** Kunia, Waikele, Waipahu

2018 Leeward Region Joint Broker's Open (JBO) Schedule

FEATURED Monthly JBO's are held every 3RD WEDNESDAY'S after the LRG meeting

	Times	Area	Coordinator	Phone	Company	Email
January 17th	10:30am-12:30pm	Makakilo/Kapolei	Michele Cadiente-Carg	808-223-9504	Properties International Limited	michele@pihawaii.com
February 21st	10:30am-12:30pm	Ocean Pointe/Kamakana	Etsuko Fields	808-782-8417	Berkshire Hathaway HomeServices	etsukof@bhshawaii.com
	11:30am-1:00pm	Ewa Gentry/Ewa Village	Sylvia Grady	808-445-7929	Berkshire Hathaway HomeServices	sylvia@bhshawaii.com
March 21st	10:30am-12:30pm	Pearl City	Janine Chang	808-341-6022	Horita Realty LLC	ic@janinechang.com
	10:30am-12:30pm	Aiea/Halawa/Foster Village	Ayla Toman	808-436-9195	Coldwell Banker	aylat@cbpacific.com
April 18th	10:30am-12:30pm	Royal Kunia/Village Park	Grace Apple	808-457-2709	Coldwell Banker	gapple@cbpacific.com
	11:30am-1:00pm	Waipahu Town/Waipio				
May 16th	10:30am-12:30pm	Mililani Town/Wahiawa	Yuki Takenaka	808-741-6146	List Sotheby's International Realty	hirealestate@hawaii.rr.com
	10:30am-12:30pm	Mililani Mauka	Yuki Takenaka	808-741-6146	List Sotheby's International Realty	hirealestate@hawaii.rr.com
June 20th	11:30am-1:30pm	Leeward Coast	Chance Knell	808-282-6002	Foster Realty, Inc	Chance@foster-realty.com
July 18th	10:30am-12:30pm	Waikale	Colleen Pang-Wong	808-677-1459	Century 21 Homefinders	Colleen@RealEstateOahu.com
August 15th	10:30am-12:30pm	Ocean Pointe/Kamakana	Etsuko Fields	808-782-8417	Berkshire Hathaway HomeServices	etsukof@bhshawaii.com
	11:30am-1:00pm	Ewa Gentry	Sylvia Grady	808-445-7929	Coldwell Banker	sylvia@cbpacific.com
September 19th	10:30am-12:30pm	Pearl City	Janine Chang	808-341-6022	Horita Realty LLC	ic@janinechang.com
	10:30am-12:30pm	Aiea/Halawa/Foster Village	Ayla Toman	808-436-9195	Coldwell Banker	aylat@cbpacific.com
October 17th	10:30am-12:30pm	Royal Kunia/Village Park	Grace Apple	808-457-2709	Coldwell Banker	gapple@cbpacific.com
	11:30am-1:00pm	Waipahu Town/Waipio				
November 21st	10:30am-12:30pm	Mililani Town	Yuki Takenaka	808-741-6146	List Sotheby's International Realty	hirealestate@hawaii.rr.com
	10:30am-12:30pm	Mililani Mauka	Yuki Takenaka	808-741-6146	List Sotheby's International Realty	hirealestate@hawaii.rr.com
December 19th	Holiday Celebration	No Coordinated JBO				

Weekly JBO's

	Times	Area	Coordinator	Phone	Company	Email
1st Wednesday	10:30am-12:30pm	Kapolei	Michele Cadiente-Carg	808-223-9504	Properties International Limited	michele@pihawaii.com
	11:30am-1:00pm	Makakilo	Michele Cadiente-Carg	808-223-9504	Properties International Limited	michele@pihawaii.com
	10:30am-12:30pm	Ko'Olina	Kehaulani Breault	808-721-0807	Berkshire Hathaway HomeServices	Kehaulanib@bhshawaii.com
1st Thursday	10:30am - 12:30pm	Leeward Coast	Chance Knell	808-282-6002	Foster Realty, Inc	Chance@foster-realty.com
2nd Wednesday	10:30am-12:30pm	Ocean Pointe/Kamakana	Etsuko Fields	808-782-8417	Berkshire Hathaway HomeServices	etsukof@bhshawaii.com
	10:30am-12:30pm	Ewa Gentry/Ewa Village	Sylvia Grady	808-445-7929	Berkshire Hathaway HomeServices	sylvia@bhshawaii.com
2nd Thursday	10:30am-12:30pm	Aiea/Halawa/Foster Village	Ayla Toman	808-436-9195	Coldwell Banker	aylat@cbpacific.com
	10:30am-12:30pm	Pearl City	Janine Chang	808-341-6022	Horita Realty LLC	ic@janinechang.com
3rd Thursday	10:30am-12:30pm	Royal Kunia/Village Park	Grace Apple	808-457-2709	Coldwell Banker	gapple@cbpacific.com
	11:30am-1:00pm	Waipahu Town/Waipio				
4th Wednesday	10:00am-12:00noon	Waikale	Colleen Pang-Wong	808-677-1459	Century 21 Homefinders	Colleen@RealEstateOahu.com
	11:30am-1:00pm	Mililani Town/Wahiawa	Yuki Takenaka	808-754-6146	List Sotheby's International Realty	hirealestate@hawaii.rr.com
	10:30am-12:30pm	Mililani Mauka	Yuki Takenaka	808-741-6146	LIST Sotheby's International Realty	hirealestate@hawaii.rr.com
5th Wednesday	10:30-12:30pm	New Developments	Etsuko Fields	808-782-8417	Berkshire Hathaway HomeServices	etsukof@bhshawaii.com

2018 Leeward Region Joint Broker's Open (JBO) Schedule

Because of the vast size and uniqueness of the Leeward Region, a monthly "featured" and "weekly" Joint Broker's Open (JBO) schedule has been created.

What is the difference between the featured and weekly Joint Broker's Open?

FEATURED Leeward Region JBO:

- Is held after the monthly Leeward Regional Group (LRG) Meeting.
- The LRG meetings are held every 3rd Wednesday's of the month at the Okinawa Center in Waipio from 9am to 10am

WEEKLY Leeward Region JBO:

- Are held on the following days of the month:
 - 1st Wednesday
 - 1st Thursday
 - 2nd Wednesday
 - 2nd Thursday
 - 3rd Thursday
 - 4th Wednesday
 - 5th Wednesday

We have a very knowledgeable, professional and supportive Leeward Region JBO Coordinator Team who volunteers to their time to assist you.

If you have a listing in the Leeward Region, please expect a call and/or email from one of our JBO Coordinators. They have one goal in mind...to get a Seller's property SOLD as quickly as possible. This is a benefit for You and your Seller.

We cannot emphasize how valuable it is to participant in Broker Opens Houses. This is a smart way to market your listing to industry professionals in your community.

We look forward to your participation as a listor or viewer.

Mahalo,

Your Leeward Regional Board